

# SP MANWEB

## Reinforcement to the North Shropshire Electricity Distribution Network



Document Reference: 5.1.4  
Consultation Report  
Appendices to Chapter 4

PINS Reference: EN020021  
Planning Act 37(3)(c)  
November 2018

*This page is intentionally blank*

**SP MANWEB**

**Reinforcement to the North Shropshire  
Electricity Distribution Network**

**Appendix to Chapter 4**

**4.1 Stage One Consultation Feedback Report,  
November 2016**

**DCO Document 5.1.4**

**PINS Reference: EN020021  
Planning Act 37(3)(c)  
November 2018**



## **Reinforcement to North Shropshire Electricity Distribution Network:**

**Stage One Consultation Feedback Report  
November 2016**



# GILLESPIES

## PROJECT TITLE

North Shropshire Reinforcement Project

## DOCUMENT TITLE

M5405 Stage One Feedback Report

REV	DATE	DETAIL	AUTHOR	CHECKED BY	APPROVED BY
OO	01.11.2016	First Issue	KI	SE	
-	-	-	-	-	-
-	-	-	-	-	-
-	-	-	-	-	-

# CONTENTS

SECTION 1.0	Introduction	4
SECTION 2.0	Stage one consultation	9
SECTION 3.0	Recording feedback	17
SECTION 4.0	Feedback submission and responses	19
SECTION 5.0	Conclusions and next steps	29

# 1. INTRODUCTION

## PURPOSE OF STAGE ONE CONSULTATION FEEDBACK REPORT

- 1.1 This report, which has been prepared by SP Energy Networks and its communications advisers, Camargue, outlines the scope of the informal Stage One Consultation and the review of feedback received. It sets this out by:
- Providing an overview of how the Stage One Consultation was undertaken;
  - Explaining how feedback responses have been recorded;
  - Assessing feedback to identify key issues and providing responses
- 1.2 SP Energy Networks has also published an Updated Line Route Report, which explains how feedback on the Preferred Line Route and Options and Likely Environmental Impacts has been considered.

## STAGE ONE CONSULTATION

- 1.3 As part of this stage of consultation, SP Energy Networks developed a consultation strategy document. This was agreed in June 2016 with Shropshire Council, the relevant local authority. The strategy document, referred to as Approach to Stage One Consultation followed discussion with Shropshire Council in May 2016 on a draft report.
- 1.4 Stage One Consultation commenced on 29 June 2016 and ran until 9 September 2016. As explained in the Approach to Stage One Consultation document, this consultation focused on:
- The preferred line route, with options in some sections, in terms of its location and limits;
  - The likely environmental impacts of the preferred line route and its associated construction works, such as storage areas for equipment i.e. lay-down areas, and transport;
  - Any other aspects of the current proposals or the work to reach this point; and
  - SP Energy Networks' approach to consultation.

The preferred line route and options were split into sections 1-4 and respondents were asked to include references to sections or geographical locations wherever possible.

- 1.5 The preferred line route and options that SP Energy Networks consulted on can be viewed in the Project Update One Summer 2016 newsletter in **Appendix 1**. This newsletter was sent to residents in the project consultation zone (see 1.8-1.11).
- 1.6 The newsletter included a section headed 'Our work so far – identifying route options' which referred to the assessment work carried out in Steps 1 and 2 prior to identifying the line route options (Step 3) and then the preferred line route itself (Step 4).

FIGURE 1 – SP ENERGY NETWORKS' PREVIOUS WORK

STEP

1

### Where to reinforce the network

During 2015, SP Energy Networks considered a number of alternative overhead line routes from other substations at Legacy and Marchwiell near Wrexham, Crewe and Shrewsbury. These alternatives, however, have been discounted due to technical suitability, costs and potential increased environmental impacts. The route from Oswestry to Wem was considered most suitable.

STEP

2

### Choosing route corridors

In the latter part of 2015 and early 2016, we considered the location of villages and towns, the landscape, cultural heritage and other environmental sensitivities to develop **broad route corridors** (broad ribbons of land) which we could route the line within.

From our initial routeing work, we then identified two route corridors from Oswestry to Wem, each up to 1km wide, and assessed them to see which had the least impact overall. We have based our consultation zone on an area around these two route corridors to give local people in this area the opportunity to be involved.

STEP

3

### Identifying line routes

More recently in 2016, we have carried out further work within the overall preferred corridor to identify and then consider alternative **line route options**. These alternative line routes are 100 metres wide at this stage, which enables flexibility for a more refined design at the next stage of our work. These line routes also include the land needed for constructing the overhead line (such as temporary construction roads and lay-down areas).

STEP

4

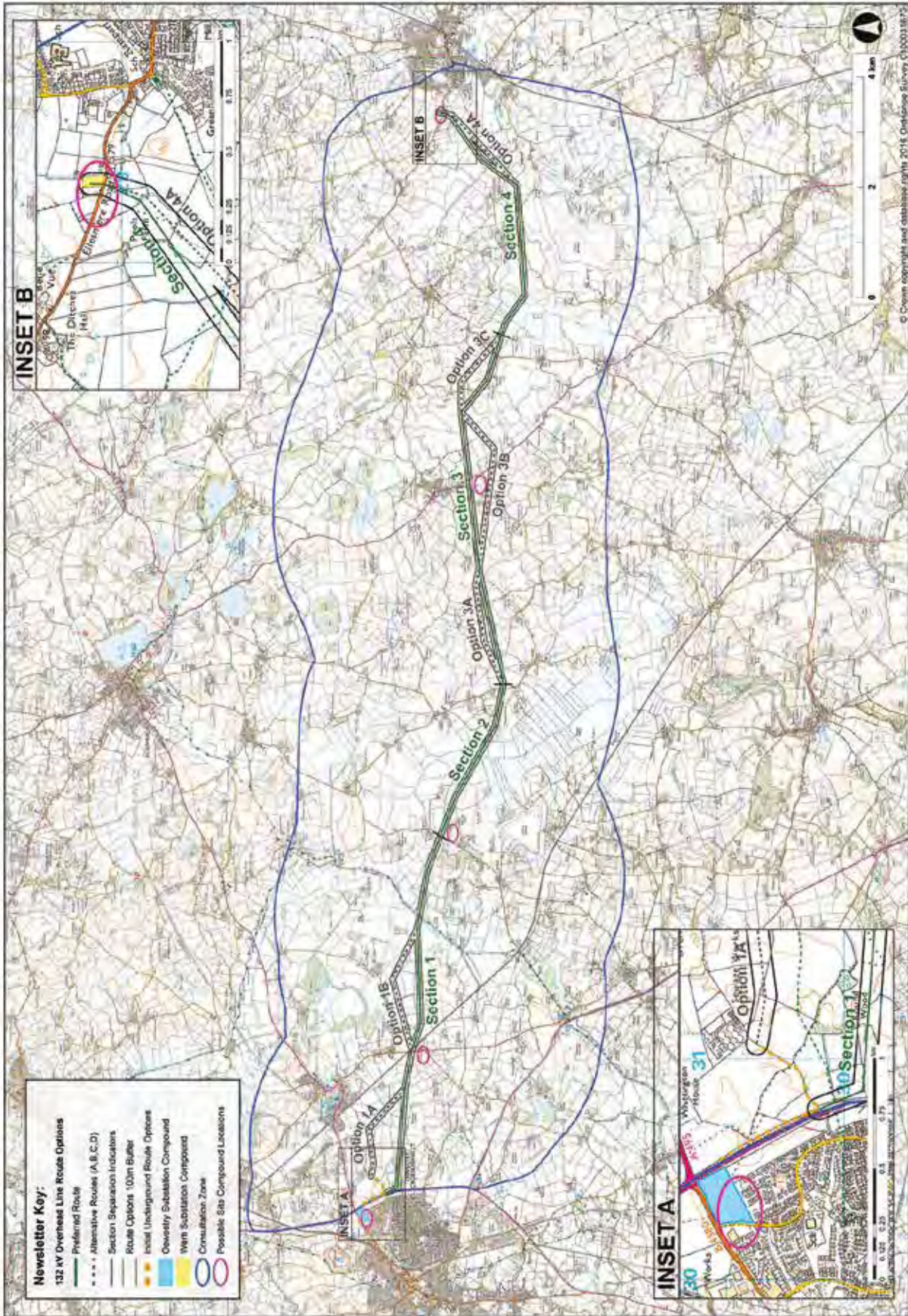
### Choosing a preferred line route

Following further assessment, we have now identified our **preferred line route** (shown on the map inside) – the option which we think is the preferred design to minimise likely effects on the environment. In doing so, we have also identified alternative line route options in some sections.

- 1.7 Step 1 explains the initial work considering technical alternatives and the preferred scheme for reinforcing the network between Oswestry and Wem. Step 2 explains SP Energy Networks' work on developing and identifying wider and less specific broad route corridor options, from which two route corridors up to 1km wide were identified and assessed. The newsletter referred to this work being set out in technical reports, which were made available on the project website and at six locations locally.
- 1.8 Reference is made in Step 2 to how the two route corridors formed the basis of the consultation zone shown in the newsletter. SP Energy Networks considered the zone of effect of its proposals - where the project may have a direct impact (either permanently and/or temporarily) through the construction period and then operation. Earlier routing work also informed this consultation zone.
- 1.9 SP Energy Networks considered that these effects were mostly within an area of approximately 2km to the north and south of the two route corridors used for earlier routing work. Initially, and as referred to in the draft consultation strategy shared with Shropshire Council in May 2016, this area excluded the urban areas of Oswestry and Wem to the west and east of the route corridors as the two substation sites are on the edges of both towns.
- 1.10 Following consultation with Shropshire Council on the consultation zone, SP Energy Networks reviewed the extent of this area and considered it appropriate to extend it eastwards to include the western fringes of Wem. At the Oswestry end, SP Energy Networks considered it was reasonable to retain the consultation zone as initially shown because the works here would be within the existing substation compound and the 132kV reinforcement would exit the substation via underground cables along the existing verge of the main road. As such, it did not consider there to be likely visual or other impacts arising. The consultation zone in the consultation strategy agreed with Shropshire Council therefore shows an extended area at the eastern end (see Figure 2).
- 1.11 The consultation zone as finally agreed is a sufficiently broad area that includes communities beyond those more likely to be directly affected in the immediate vicinity of the proposals.
- 1.12 SP Energy Networks and their communications advisers, Camargue, undertook further work to identify relevant stakeholders. This included notifying statutory consultees required by the Planning Act 2008, as well as a number of other groups that may have an interest in the project. These are listed in **Appendix 2**.
- 1.13 Furthermore, as most of the parish council areas within the consultation zone extend beyond the 2km zone, the communities outside the zone would also have been made aware of the proposals through the letters and posters sent out to the clerks from these local councils. This included also sending letters and posters to Oswestry Town Council and parish councils listed in **Appendix 3** under the heading 'Parish councils with areas within the consultation zone'. In addition, county councillors were notified along with a number of local groups and organisations. A press release was also sent to a number of local newspapers and the project received coverage in a number of newspapers circulated in the wider area.



FIGURE 2 – STAGE ONE CONSULTATION ZONE (AS AMENDED)





- 1.14** Prior to sending out the newsletters, SP Energy Networks held a briefing on the 28 June 2016 for Shropshire Council county councillors and parish councillors whose boundaries extend into the consultation zone. Posters were available at this event advertising the consultation and parish councils were asked to display these on public notice boards.
- 1.15** The newsletter outlined the project proposals, explaining the specific areas that SP Energy Networks was consulting on, and how the feedback will be used to review the proposals. Reference to how feedback could be provided was also explained.
- 1.16** The newsletter also provided details of four public exhibitions that had been arranged as part of the consultation in each section of the preferred line route. More details of these events are available in **chapter 2**.

## 2. STAGE ONE CONSULTATION

### CONSULTATION STRATEGY

- 2.1 The Approach to Stage One Consultation June 2016, agreed with Shropshire Council, set out the approach to consultation under a number of headings. SP Energy Networks used this approach to carry out the Stage One Consultation.

### WHO SP ENERGY NETWORKS CONSULTED

- 2.2 Residents and businesses within the consultation zone received newsletters – in total 3,135 newsletters were posted out at the start of consultation.
- 2.3 SP Energy Networks also held a briefing for parish councils on the 28 June. All parish councils within the consultation zone were invited to attend the event. At the start of consultation, letters were sent to all relevant parish and town councils. This mailing included posters (see **Appendix 3**) and a request to councils to display these in public locations. Posters were also available at SP Energy Networks' parish council briefing held on 28 June 2016. Calls were made to key parish councils during the consultation, encouraging them to submit feedback.
- 2.4 SP Energy Networks issued press releases to local newspapers, such as the Shropshire Star, Oswestry and Border Chronicle and Whitchurch Herald, to promote the start of the consultation. Coverage generated by these releases appeared in local newspapers.
- 2.5 Newsletters were issued to:
- County councillors within whose wards the proposals were sited and those with relevant portfolios
  - Members of Parliament and Members of the European Parliament representing constituencies consulted with
  - Identified special interest groups (such as local wildlife, heritage and leisure groups)
  - Hard to reach groups SP Energy Networks identified in the area
- 2.6 Landowners were consulted by way of a separate letter (**Appendix 4**) sent out to all landowners affected by the earlier route corridors 2 and 3.

### HOW SP ENERGY NETWORKS CONSULTED

- 2.7 Project newsletter – SP Energy Networks presented the preferred line route and route options in an A2 plan with an OS base map and invited feedback on this information. It also referred to the reasons why a new 132kV overhead Trident line is being proposed and what the next stages will be.
- 2.8 Feedback form – SP Energy Networks published a feedback form (see **Appendix 5**) that was available to download or submit online, at public events, at local libraries and on request from the community relations team. The feedback form was designed to be easy-to-use and focused on four key points of consultation (see 1.4). A freepost address was provided for forms to be returned. All respondents who provided contact details received an acknowledgement that their feedback has been received. A copy of this acknowledgement can be found in **Appendix 6**.

**2.9** Project website - SP Energy Networks launched its project website on the first day of consultation. The website contained information on the project, supported by maps and technical documents. The website can be found at: [http://www.spenergynetworks.co.uk/north\\_shropshire](http://www.spenergynetworks.co.uk/north_shropshire). Screenshots from the website are available in **Appendix 7**.

**2.10** SP Energy Networks held four public events in venues suitable for public gatherings:

- 13 July, 5.00pm-8.00pm – Whittington Community Centre
- 14 July, 3.30pm-7.30pm – Wem Town Hall
- 18 July, 3.30pm-7.30pm – Cockshutt Millennium Hall
- 19 July, 3.30pm-7.30pm – Hordley and Bagley Village Hall

Events included a full suite of community and technical documents, as well as exhibition panels, image folios and additional maps. The events were staffed by SP Energy Network employees and associated specialists, representing a wide range of expertise. Members of the public were able to ask questions of the project team and submit feedback. A record of these consultation events is available in **Appendix 8**.

## TECHNICAL MATERIALS

**2.11** SP Energy Networks published three technical reports in June 2016: Strategic Options Report, Route Corridor Report and Line Route Report. Copies of these reports were made available on the project website and in local libraries.

## VIEWING MATERIALS AT LOCAL LIBRARIES

**2.12** Copies of the three technical reports together with the newsletter and feedback form could be viewed at the following libraries and civic offices, which were asked to make them available to the general public:

- Wem Library
- Oswestry Library
- Ellesmere Library
- Cockshutt Memorial Hall
- Wem Town Council offices
- Whitchurch Library

These locations were advertised in the project newsletter and on the project poster.

## PUBLICITY

- 2.13 Following the issuing of a press release, which announced the launch of the consultation and provided an outline of the proposals, the project received the following coverage in the press as well as online:

# POWER UPGRADE TALKS TO BEGIN

Report by James Pugh

**THE next stage of an £18 million scheme to increase the electricity capacity in towns across north Shropshire will begin within weeks.**

Scottish Power (SP) Energy Networks said consultation about the upgrade, which will benefit Wem and Whitchurch and Oswestry, will begin in July.

The investment will see a new 132,000 volt overhead wooden pole power line built between Wem and Oswestry.

The new power line will provide additional capacity in the region to support business investment and new residential developments across the region.

The proposal is to build a new line between Oswestry substation, located at the A5/A495 roundabout, and Wem substation, located on Ellesmere Road on the western side of Wem.

Mark Sobczak, head of 132kV programmes at SP Energy Networks, said: "This is one of the

most significant upgrades to the electricity network ever proposed for north Shropshire.

"We want to ensure that the network is modern, reliable and capable of supporting opportunities for future growth.

"We now wish to open up the initial consultation period. All of the feedback we receive will be taken in to account."

Councillor Steve Charmley, deputy leader and portfolio holder for business and economy at Shropshire Council, said: "These proposals are good news. Shropshire Council has been pressing for investment in north Shropshire infrastructure for a number of years.

"With the new homes and employment sites proposed, we are going to need the extra power."

Several consultation events are being held. These include presentations at Wem Town Hall on July 14, from 3.30pm to 7.30pm; Millennium Hall in Cockshutt on July 18, from 3.30pm to 7.30pm, and in Hordley and Bagley Village Hall, near Ellesmere, on July 19, from 3.30pm to 7.30pm.

## Consultation is opened on power plans

CONSULTATION has opened on plans for an £18 million overhead power line between Oswestry and Wem.

SP Energy Networks has described the project as "one of the most significant upgrades to the electricity network ever proposed for North Shropshire."

The wood pole overhead line is needed to enhance the network and support growth across the area and consultation closes on September 9.

SP Energy Networks is seeking community feedback on its proposals which will see a new 132,000 volt overhead wooden pole power line built.

The proposal is to build a new line between Oswestry substation, located at the A5/A495 roundabout, and Wem substation, located on Ellesmere Road on the western side of Wem.

After investigating a number of options for reinforcing the network, SP Energy Networks proposes that a new wooden pole line is the most appropriate solution.

The company plans to build the new overhead line using a wood pole Trident design.

Mark Sobczak, Head of 132kV Programmes at SP Energy Networks, said: "This is one of the most significant upgrades to the electricity network ever proposed for North Shropshire."

A series of consultation events will be held including one on July 13 at Whittington Community Centre near Oswestry from 5pm to 8pm.

Oswestry and Border Counties Advertiser  
5 July 2016

Oswestry and Border Chronicle  
30 June 2016



# Sparking bid for modern network

**IT has been blamed for job losses and the relocation of existing businesses.**

But now a major step is being taken to increase the electricity capacity in towns across north Shropshire, including Wem, Whitchurch and Oswestry. Scottish Power (SP) Energy Networks, which is behind the project, says the upgrade will help support existing and new businesses as well as new residential developments being built in the area.

The investment will see a new 132,000 volt overhead wooden pole power line built between Oswestry and Wem. The proposal is to build a new line between Oswestry substation at the A5/A495 roundabout, and Wem substation in Ellesmere Road on the western side of Wem.

Civic leaders in the affected towns have welcomed the news and say improving the region's infrastructure is vital in supporting existing and new homes and businesses.

Councillor Rosemary Dodd, mayor of Wem, said: "It is at a very early stage, but with things like this there has to be consultation."

"Until we have had the consultation we don't know how people are going to feel about it. I think it is going to affect Wem rural more than people in Wem town."

"It is needed. With all the new housing we need better infrastructure. Businesses will benefit too."

"To improve the current system has only got to be a good thing. Things like this need updating."

The lack of power in the region, particularly in Whitchurch, has been blamed for job losses and relocation of businesses such as Tension Control Bolts Ltd over the last few years.

The lack of electricity supply has also previously been put forward as a reason to approve plans submitted by the town's storage and distribution firm Grocontinental for an anaerobic digestion power plant opposite its current site on the Whitchurch Business Park.

Peggy Mullock, Shropshire councillor for Whitchurch, said: "I am delighted to see Scottish Power will finally upgrade the system."

"It will bring much-needed electricity to the town to encourage more businesses to come our way and to support existing and new homes."

SP Energy Networks said the new 132,000 volt wooden pole line is the most appropriate solution after investigating a number of options for reinforcing the network.

It plans to build the new overhead line using a wood pole Trident design – a design which is said to be a tried and tested, constructed most recently for reinforcing the electricity distribution network between

Legacy substation and Oswestry substation.

The firm said the new connection will be built using wooden poles that look like many of the electricity lines already in north Shropshire – such about 12 metres high.

The wooden pole design provides a good opportunity to build the connection in a way that has as little effect on the area as possible, it added. Several consultation events are being held in the region in July to allow residents to find out more about the scheme.

They will take place in Whittington, near Oswestry; Wem; Hordley, near Ellesmere; and Cocksbutt.

Mayor of Oswestry Councillor Paul Milner said: "I welcome Scottish Power's investment into the local area, which is certainly needed with new housing and developments planned as well as local businesses."

"This investment supports local development, improving our infrastructure."

"I encourage members of the public to go along to the consultation events and have their say, and raise any concerns or questions they may have."

SP Energy Networks would particularly like to get feedback on the preferred line route in terms of its location and limits, and the likely environmental impacts of the preferred line route and its associated construction works, such as storage areas for equipment.

The firm said it will then consult with the public again next year to get comments on a detailed design, which will include the locations of the poles.

Following this, it hopes to submit an application for a development consent order to allow it to go ahead, with a decision expected by the autumn of 2020.

Documents submitted in support of the scheme said: "This line will provide capacity to support development on land allocated for new jobs and homes in Oswestry, Whitchurch and Wem in current planning forecasts to 2026."

"It will attract future business and housing investment across north Shropshire through to and



Shropshire Star  
30 July 2016

beyond 2026.

"The new overhead line will reinforce the existing 33,000 volt electricity distribution network by

increasing the capacity available throughout north Shropshire. We are holding events in the local area for people to view maps and to talk to our team.

"We need to find a suitable route for the new electricity distribution line. Feedback from the local community will play an important role in assisting us to establish the final line route."

"We have carried out a considerable amount of investigatory work to look at and consider the location of communities, heritage features and other sensitive areas."

"From these investigations, we have developed a number of proposed routes that seek to either avoid or mitigate impacts on these areas."

"We now wish to open a consultation to enable people living in the area to have their say about our proposals. This is stage one of a two stage consultation. We will use feedback together with our assessments to establish the most appropriate route in order to reinforce the north Shropshire electricity distribution network."



### Consultation plans

DATE	LOCATION	TIME
Wednesday 13th July	Whittington Community Centre, Oswestry SY11 4BS	5.00pm - 8.00pm
Thursday 14th July	Wem Town Hall High Street, Wem SY4 5DC	5.30pm - 7.30pm
Monday 18th July	Cocksbutt Millennium Hall, Cocksbutt SY12 0JQ	5.30pm - 7.30pm
Tuesday 19th July	Hordley and Bagley Village Hall, Lower Hordley, Nr Ellesmere SY12 9BQ	5.30pm - 7.30pm

# Learn more about £18m power plan

Oswestry and Border Counties Advertiser  
5 July 2016

by EMILY DAVIES

[emily.davies@nwm.co.uk](mailto:emily.davies@nwm.co.uk)

AN ENERGY giant has announced a public consultation as part of its latest £18 million electricity scheme for North Shropshire.

SP Energy Networks is looking to invest the multi-million figure to enhance the electricity network across the region, including a 132,000 volt overhead wooden pole power line between Oswestry and Wern.

The 10-week consultation, which will be supported by a series of community events along the route, will reveal how the new line can support business growth and residential development.

Mark Sobczak, head of 132kV programmes at SP Energy Networks, said: "This is one of the most significant upgrades to the electricity network ever proposed for north Shropshire. We want to ensure the network is modern, reliable and capable of supporting opportunities for future growth.

"We now wish to open up the initial consultation period to enable people living in the area to have their say about our proposals. All the feedback we receive will be taken into account."

The initiative builds on the new line between Wrexham and Oswestry, and the town's upgraded substation.

Councillor Steve Charmley, deputy leader and portfolio holder for business and economy at Shropshire Council, added: "These

proposals are good news. Shropshire Council has been pressing for investment in North Shropshire infrastructure, including Whitechurch, for a number of years.

"With the new homes and employment sites proposed, we are going to need the extra power.

"The North Shropshire reinforcement project will help our area realise its economic ambitions and ensure we continue to enjoy a reliable electricity supply."

The consultation runs until September 9, and community events take place on:

■ **Wednesday, July 13** from 5pm to 8pm at Whittington Community Centre;

■ **Thursday, July 14** from 3.30pm to 7.30pm at Wem Town Hall;

■ **Monday, July 18** from 3.30pm to 7.30pm at Cocksbutt Millennium Hall; and

■ **Tuesday, July 19** from 3.30pm to 7.30pm at Hordley and Bagley Village Hall.

For more information visit [www.spenergynetworks.co.uk/north\\_shropshire](http://www.spenergynetworks.co.uk/north_shropshire) or visit libraries at Oswestry, Eleanore, Whitechurch and Wern, Wern Town Council and Cocksbutt Millennium Hall.

# Learn more about £18m power plan

Whitchurch Herald  
6 July 2016

AN ENERGY giant has announced a public consultation as part of its latest £18 million electricity scheme for North Shropshire.

SP Energy Networks is looking to invest the multi-million figure to enhance the electricity network across the region, including a 132,000 volt overhead wooden pole power line between Oswestry and Wern.

The 10-week consultation, which will be supported by a series of community events along the route, will reveal how the new line can support business growth and residential development.

Mark Sobczak, head of 132kV programmes at SP Energy Networks, said: "This is one of the most significant upgrades to the electricity network ever proposed for north Shropshire. We want to ensure the network is modern, reliable and capable of supporting opportunities for future growth.

"We now wish to open up the initial consultation period to enable people living in the area to have their say about our proposals. All the feedback we receive will be taken into account."

The initiative builds on the new line between Wrexham and

LANDOWNERS and property occupiers along the preferred route are being urged to seek professional advice if they are affected by the project.

The call comes from Shaun Jones, a rural professional director at Shropshire estate agents and surveyors Halls.

Scottish Power Energy Networks has begun consultations about the electricity supply upgrade.

Mr Jones advised landowners and property occupiers along the preferred route to carefully consider the plans and decide

whether they wish to comment during the consultation period.

"We are happy to represent them in negotiations about accommodation works and to submit compensation claims on their behalf," he said.

"This is a major project for North Shropshire, which is likely to impact on many properties along the route.

"It's important that landowners and occupiers receive professional advice from an early stage to protect their interests."

Mr Jones may be contacted at Halls on 01743 450700.

Oswestry, and the upgraded substation.

Councillor Steve Charmley, deputy leader and portfolio holder for business and economy at Shropshire Council, added: "These proposals are good news. Shropshire Council has been pressing for investment in North Shropshire infrastructure, including Whitechurch, for a number of years.

"With the new homes and employment sites proposed, we are going to need the extra power.

"The North Shropshire project will help our area realise its

economic ambitions and ensure we continue to enjoy a reliable electricity supply."

The consultation runs until September 9, and community events take place on:

■ **Thursday, July 14** from 3.30pm to 7.30pm at Wem Town Hall;

■ **Monday, July 18** from 3.30pm to 7.30pm at Cocksbutt Millennium Hall; and

■ **Tuesday, July 19** from 3.30pm to 7.30pm at Hordley and Bagley Village Hall.

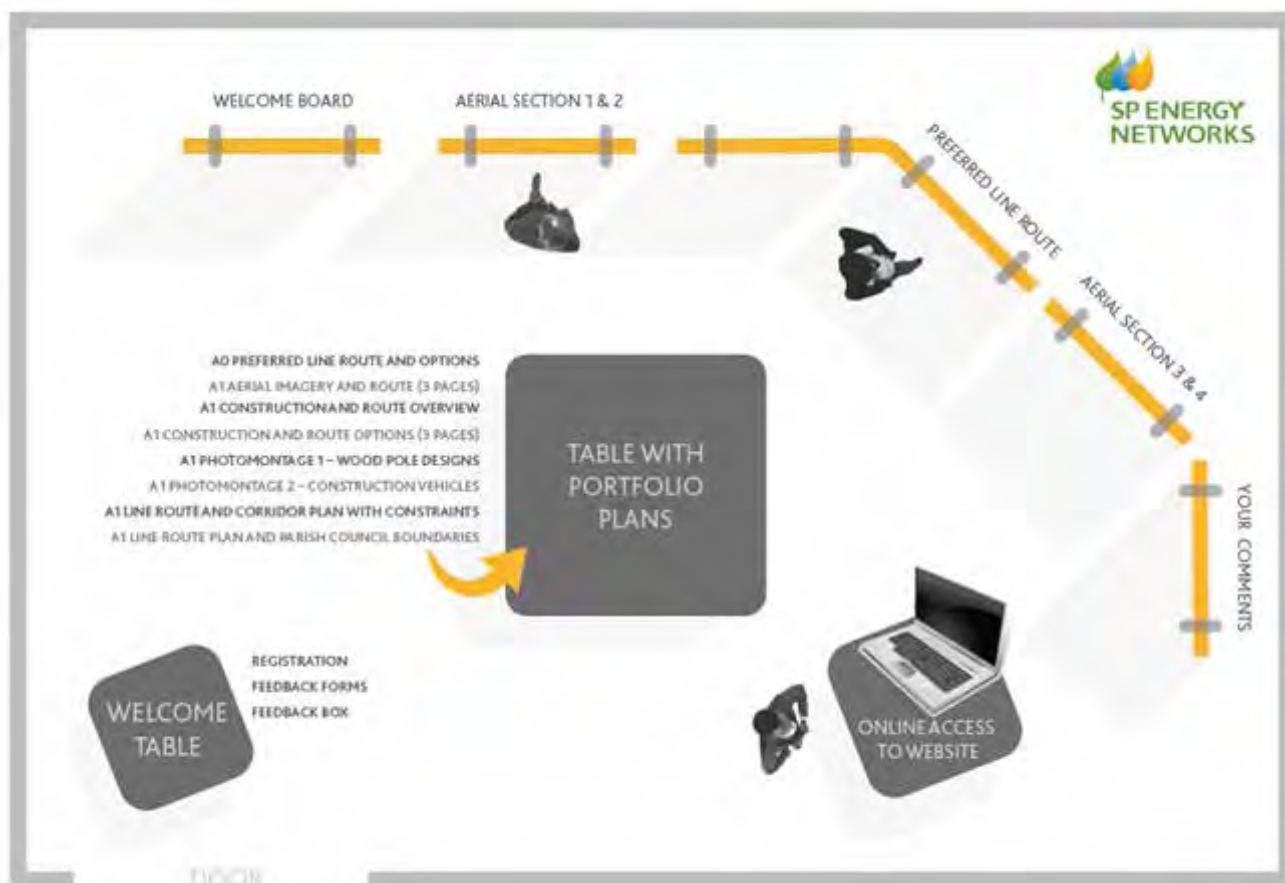
For more information visit [www.spenergynetworks.co.uk/north\\_shropshire](http://www.spenergynetworks.co.uk/north_shropshire)



## PUBLIC EXHIBITIONS OVERVIEW

2.14 The Stage One Consultation public exhibitions were held to ensure people had the opportunity to talk face-to-face to the SP Energy Networks' project team and be advised of the project proposals. Visitors were informed of the consultation material available in a guide on display at the entrances to the events.

FIGURE 3 – THE LAYOUT OF A CONSULTATION EVENT



2.15 Available at every consultation event were:

- A portfolio containing:
  - A0 Preferred line route and options plan
  - A1 Aerial imagery and route (in 3 sections)
  - A1 Construction and route overview
  - A1 Construction and route options (in 3 sections)
  - A1 Photomontage 1 – wood pole designs
  - A1 Photomontage 2 – construction vehicles
  - A1 Line route plan and constraints

- Event panels:
  - 'Welcome to our consultation' panel
  - 'Your comments can influence our work' panel
  - 'Our preferred line route and line route options' double map panel
  - 'Aerial views west' panel
  - 'Aerial views east' panel
  
- Our technical documents
  - Strategic Options Report
  - Route Corridor Report
  - Line Route Report
  
- Community documents
  - Project Update One newsletter
  - Consultation feedback form

**2.16** SP Energy Networks ensured land, environmental and engineering specialists were available at all exhibitions to discuss specific issues.. Visitors were encouraged to provide feedback on the proposals and focus comments on specific sections of the project. Visitors were also advised of the consultation deadline was 9 September 2016. Summaries of the events, including photographs and details of the conversations, are available in **Appendix 8**.

**2.17** The event panels can be viewed in **Appendix 9**.

**2.18** **Table 2** sets out the dates of the public exhibitions and the level of attendance. In total 79 people attended the public exhibitions.

**TABLE 2 – CONSULTATION EVENTS AND ATTENDANCE**

EVENT	DATE	TIME	LOCATION	ATTENDED
1	Wed 13 July	5.00pm-8.00pm	<b>Whittington Community Centre</b> Oswestry SY11 4BS	<b>18</b>
2	Thurs 14 July	3.30pm-7.30pm	<b>Wem Town Hall</b> High Street, Wem SY4 5DG	<b>20</b>
3	Mon 18 July	3.30pm-7.30pm	<b>Cockshutt Memorial Hall</b> Cockshutt SY12 0JQ	<b>30</b>
4	Tues 19 July	3.30pm-7.30pm	<b>Hordley and Bagley Village Hall</b> Lower Hordley, Nr Ellesmere SY12 9BQ	<b>11</b>

## CONSULTING WITH STAKEHOLDERS

- 2.19** SP Energy Networks informed stakeholders and special interest groups of the proposals and consultation by mailing the newsletter on 29 June 2016. See Appendix 3.
- 2.20** SP Energy Networks followed up these enquiries with a number of these groups following the start of consultation, through phone calls, emails and meetings. These groups included: Historic England, Natural England, the Civil Aviation Authority, Network Rail, RSPB, Wildlife Trust, Shropshire Council, Environment Agency and relevant parish councils.
- 2.21** The following statutory stakeholders provided feedback during Stage One Consultation:
- West Felton Parish Council
  - Environment Agency
  - Whittington Parish Council
  - Oswestry Rural Parish Council
  - Severn Trent Water
  - Baschurch Parish Council
  - Canal and River Trust
  - Severn Trent Water
  - Cockshutt Parish Council
  - Wem Rural Parish Council
  - Loppington Parish Council
  - Hordley Parish Council
  - MOD
  - Shropshire Council
  - Natural England
  - Oswestry Rural Parish Council
  - Wem Town Council
  - Natural England
  - Oswestry Town Council
  - NATS
  - Historic England

### OTHER ORGANISATIONS THAT PROVIDED FEEDBACK INCLUDED:

- NFU
  - RSPB
  - Shropshire Wildlife Trust
  - Woodland Trust
  - Meres and Moses Landscape Partnership Scheme
- 2.22** A summary of the feedback provided by those listed above can be found at 4.8.
- 2.23** Consultation information was also sent to the Planning Inspectorate. As part of this process published a webpage for the project on 13 August 2016. This can be viewed at <https://infrastructure.planninginspectorate.gov.uk/projects/west-midlands/reinforcement-to-north-shropshire-electricity-distribution-network/>

### 3. RECORDING FEEDBACK

- 3.1 Members of the public, statutory bodies and other groups submitted in total 68 responses in the form of written feedback in the following ways:
- Feedback forms submitted electronically or via the Freepost address;
  - Letters to the Freepost address;
  - Emails to the project email address.
- 3.2 In addition, face-to-face feedback was received through contact with communities and landowners, at public events, and telephone calls to the project enquiry line.
- 3.3 In terms of written feedback, Table 3 outlines the breakdown of feedback received.

**TABLE 3 – TYPES OF FEEDBACK RECEIVED**

TYPE	RESPONSE NUMBERS
Online Feedback Forms	3
Hard Copy Feedback Forms	21
Emails	40
Letters	4

- 3.4 All individual respondents were allocated a unique, sequential Project ID. This Project ID will be carried through to future stages of consultation, allowing future comments to be attributed to an individual already included in the consultee database.
- 3.5 A project database was created to log and track all feedback responses as it was received.
- 3.6 All feedback forms, letters and emails were processed as follows:
- If a feedback form or letter, it was scanned and filed electronically and the hard copy was safely stored. Emails or online feedback forms were copied into word documents and filed electronically.
  - A unique Project ID was given to each individual respondent in the project database.
  - The feedback form, letter or email content was then logged in the project database verbatim.

**3.7** Comments within each individual response were reviewed having regard to the four questions asked in the feedback form and were recorded as follows:

- Comments on Preferred line route and options;
- Comments on Likely environmental impacts;
- Comments on Other comments on the proposals; and
- Comments on Our consultation.

Many feedback responses contained comments that fell in to more than one category and these responses were split as appropriate.

**3.8** In total, 126 feedback comments were received in the 68 responses.

**3.9** Where relevant, these comments were further categorised by the particular section of the preferred route to which they referred.

### FACE-TO-FACE FEEDBACK

**3.10** The Stage One Consultation public exhibitions were attended by 79 people, who were able to view information and ask the SP Energy Networks team questions about the Preferred Line Route and Options (see Appendix 9 for summaries of all face-to-face feedback captured at consultation events). The face-to-face feedback was in addition to feedback forms and other written feedback. It was written down by members of the project team at events and represented the sentiment and key points communicated verbally in direct conversation with consultees at events.

### FEEDBACK FROM LANDOWNERS

**3.11** There were two primary objectives of the consultation with landowners:

- To confirm ownership/relevant persons with an interest in land e.g. tenants of land within the preferred line route and options
- To gather initial feedback from landowners of the preferred line route and options and encourage landowners to submit feedback to the Stage One Consultation

**3.12** Landowners were invited to attend our public exhibitions through a letter sent at the launch of consultation. Landowner attendance at events was relatively high and landowners had face-to-face discussions with SP Energy Networks' appointed land agents at these events and subsequently where requested by landowners.

## 4. FEEDBACK AND SP ENERGY NETWORKS' RESPONSE

- 4.1 As set out in chapter 3, feedback was grouped into the four categories set out in the feedback form. This is how the feedback has been considered and responded to by SP Energy Networks.

### THE PREFERRED LINE ROUTE AND ITS OPTIONS AND LIKELY ENVIRONMENTAL IMPACTS

#### FEEDBACK FROM MEMBERS OF THE PUBLIC

- 4.2 Feedback which relates to the preferred line route and options and to the likely environmental impacts has been considered by SP Energy Networks' environmental advisers, Gillespies. Their assessment and responses are set out in a separate report to this feedback report – the Updated Line Route Report.
- 4.3 In summary, feedback received on the preferred line route and its options related to the overall route or to a particular section i.e., Section 1, Section 2, Section 3 or Section 4 and this is how it is summarised in the Updated Line Route Report.
- 4.4 In some cases, feedback included suggestions for alterations to options presented or to new options. The suitability of these suggestions has been considered using the same environmental and technical criteria that was used to establish the preferred line route and options set out in the earlier Line Route Report – June 2016, including:
- Length of the line route
  - Landscape and Visual amenity
  - Historic environment
  - Ecology and biodiversity
  - Water environment
  - Forestry and woodland
  - Socio economic
  - Technical feasibility
  - Planning and land use considerations
- 4.5 Having considered the suggested changes against the above criteria, SP Energy Networks' environmental advisers have made some changes to the preferred line route.
- 4.6 SP Energy Networks have also considered other changes based on ongoing site assessment work and new information arising from ongoing discussions with interested parties.
- 4.7 The Updated Line Route Report provides more details of this analysis and how this feedback has informed the development of the proposed line route.



## FEEDBACK FROM STATUTORY BODIES AND GROUPS

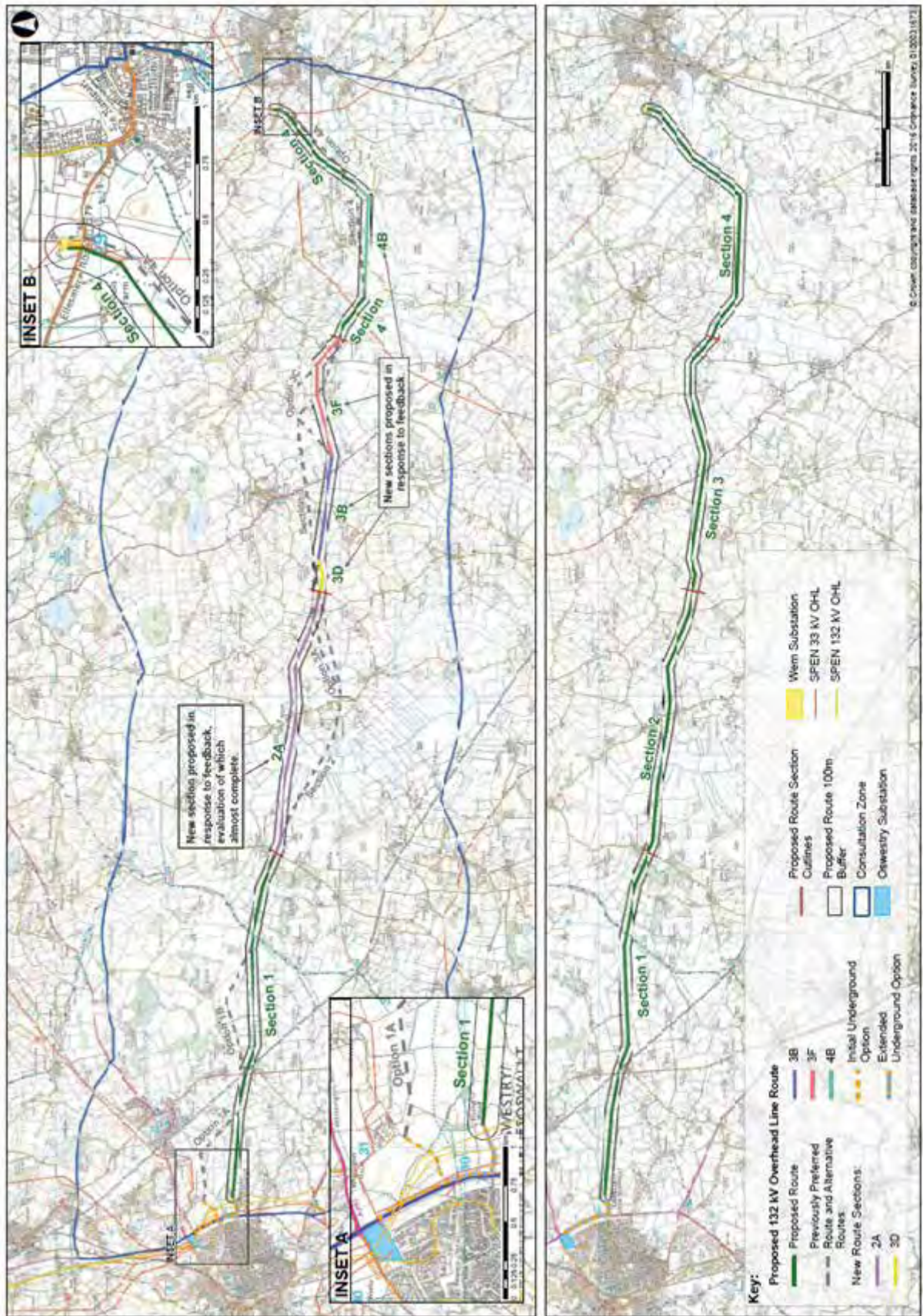
- 4.8** Feedback on the preferred line route and options and on likely environmental impacts was received from 28 statutory bodies and organisations of those listed in Appendix 3. This feedback is referred to in more detail in the Updated Line Route Report and summarised below.
- 4.9** Of the 10 parish and town councils consulted, where the preferred line directly runs through their parish, 9 of these (Oswestry Rural, Oswestry Town Council, West Felton, Hordley, Baschurch, Cockshutt, Loppington, Wem Rural and Wem Urban) have no objections.
- 4.10** Whittington PC, while not against the need for the new line, are concerned about its proximity to Babbinswood and the impacts on the setting on Whittington's historic sites, and asked why a route following an old tower line could not be used.
- 4.11** A number of other statutory environmental agencies commented as follows:
- The Environment Agency advised of works in relation to their Shropshire Groundwater Scheme in the area, planned for 2017, which comprises a number of new boreholes for future water abstraction. The borehole locations and timing of this project have been taken into account.
  - The Canal and River Trust have expressed concern about overhead lines crossing the canal and advised of the need to take their guidelines into account. SP Energy Networks is holding further discussions with the trust on these matters.
  - Natural England consider the following:
    - That there are unlikely to be any direct effects on statutory designated nature conservation sites or landscapes in the area and any indirect effects can be managed and avoided through the implementation of standard pollution prevention practices during construction phases;
    - Reference should be made to the Midlands Meres and Mosses designated sites, as, although it is agreed that effects on these sites are unlikely, the assessment should reference this;
    - Consideration should be given to setting out how, through survey and mitigation measures where necessary, protected species can be safeguarded, although no specific concerns were raised in relation to this project.
  - Historic England has considered the proposals and they do not object at this stage.
  - Severn Trent Water responded to say:
    - They have significant land interests in the area and having looked at the proposals, do not have any concerns, although ask to be kept informed as they do have improvement works planned in the area over a similar timescale to the project;
    - To be kept informed of proposals so they can review any likely impacts on their own infrastructure in the area.
  - Ministry of Defence MOD and National Air Traffic Systems (NATS) have no immediate concerns although request to be kept informed and no concerns have been received from the CAA.

**4.12** Feedback from non-statutory organisations in relation to the preferred line route and options and likely environmental effects was as follows:

- The RSPB indicated that their main, if not only, concern was to avoid breeding waders and the undesignated wet grassland habitats near Baggy Moor and would be keen to share survey data, although overall, the project area is not one of a particular sensitivity and it is good to see the designated sites have been avoided.
- The Woodland Trust have noted that Long Wood, which is at the western end near the start of the new overhead line, is of historical importance and further mapping and research, including ecological studies, need to be carried out before further comments can be made.
- The Forestry Commission has no concerns.
- Shropshire Wildlife Trust have drawn attention to the following:
  - The likelihood of great crested newts in the Oswestry substation area and need to check records at the Wem substation site;
  - The need to take into account the significant ornithological interest in the R Parry and Baggy Moor area;
  - Overall, the proposed route would appear unlikely to cause a significant impact however detailed knowledge should be used through ongoing consultation to ensure habitats and species are taken into account;
  - Measures will need to be in place to protect habitats and species during the construction phase of the project and contact should be made with the Meres and Mosses Partnership Scheme.
- The National Farmers Union requested:
  - That the proposed design is clearly communicated to and shared with farmers;
  - Consideration is given to any deviations of existing overhead lines being placed underground;
  - In addition to the engagement already taking place with landowners and occupiers, they encourage this to continue, in particular, where new accesses are required and how this can be provided whilst respecting the ongoing farming and domestic operations;
  - SP Energy Networks to maintain dialogue with landowners and occupiers regarding compensation procedures.

**4.13** SP Energy Networks has had regard to the above responses from local people and statutory and non-statutory groups, and reviewed the line route and options and likely environmental impacts. The outcome of this is the proposed line route as shown in Figure 4 below and, as referred to in the Updated Line Route Report. The report also refers to how likely environmental impacts highlighted in feedback have been considered in the further line routing work and avoided further, or acknowledged as either matters to be assessed at a later stage when there is a more refined design, or in possible future mitigation measures.

FIGURE 4 – THE PROPOSED ROUTE





## OTHER COMMENTS ON THE PROPOSALS

4.14 The feedback received from members of the public on other comments on the proposals (Question 3 on the feedback form) and SP Energy Networks’ response is summarised in this report in Table 4 below.

**TABLE 4 – OTHER COMMENTS ON THE PROPOSALS**

Project ID	Submission	Response
1 and 2 and 35	These respondents called for the line to be underground to preserve the unspoiled area of North Shropshire countryside and/or avoid land that they own, which they felt would mean all route objections could be easily overcome. They also said that underground cable would only have a short term effect, if land was returned to its original state.	SP Energy Networks considered the costs and benefits of undergrounding the new line but concluded that the proposed wood pole design and limited level of likely environmental impacts arising, the increased costs of an underground cable was not outweighed by the landscape benefits. In terms of whether and sections of the overhead line should be placed underground, SP Energy Networks will, once it has assessed the likely various environmental impacts of the new line, consider whether these are of such a concern to justify reviewing the costs and benefits of undergrounding that particular section.
2	<ul style="list-style-type: none"> <li>This respondent had concerns about the devaluation of their property as a result of the new line.</li> </ul>	SP Energy Networks has identified a proposed line route which minimises likely effects including visual amenity on occupiers of those properties nearest to the new line. It will continue to review potential impacts as it carries out further environmental assessments. Any concerns regarding potential devaluation of properties as a result of the new line is not a consideration to which it has regard.
8	<p>This respondent felt that the project is a continuation of National Grid’s Mid Wales Connection Project, and people remain opposed to new pylons in the area.</p> <p>The response highlighted the EU referendum result and stated that due to the UK leaving the EU, investment could now be made in placing the new line underground.</p>	This project is completely separate to National Grid’s Mid Wales connection proposals, and does not include installing pylons. Reference should be made to the above response regarding the comment about placing the line underground.
12	This respondent had concerns that the new line would impact on the viability of their farm, which has recently undergone investment. They also commented on the payments available to landowners who have equipment sited on their land. They questioned whether SP Energy Networks were aware of the costs to landowners associated with infrastructure on land.	SP Energy Networks has identified a proposed line route which minimises likely effects, including farming operations. . It will continue to review potential impacts as it carries out further environmental assessments.

Project ID	Submission	Response
12	This respondent asked what studies had been undertaken into the costs and impacts of wind farms and PV arrays in the area	SP Energy Networks has gathered information on a range of environmental constraints, including wind farms and solar farms in the area, and taken these sites into account in identifying the proposed route.
39	This respondent was concerned about the construction process and method, and resulting traffic in the area. They also expressed a concern about the impact on local wildlife.	SP Energy Networks has identified potential construction sites along the line route to avoid construction traffic using only one site. Once more detailed proposals are known, SP Energy Networks will review likely construction traffic movements and prepare a draft Traffic Management Plan which will indicate the types of construction traffic associated with the building of the new line and how this will operate during the construction phases.
40	This respondent felt that the close proximity of the preferred line route to Cockshutt meant that people's main concern was health effects associated to living near power lines – whether proven or not.	Whilst SP Energy Networks maintains there is no health risk, and this will be demonstrated in subsequent environmental impact assessment report, it has, in response to other concerns in relation to concerns being expressed relating to likely visual amenity impacts in the Cockshutt area, considered and is now proposing an alternative line route further to the south of the village.
44	This response questioned why SP Energy Networks was not upgrading the existing 33kV overhead line.	The existing 33kV overhead line from Wem substation cannot be upgraded because this is distributing power from Wem whereas the purpose of the reinforcement is to bring additional power into Wem substation and reinforce the local 33kV network.

4.15 The feedback received from statutory bodies and interested groups in relation to other comments on the proposals and SP Energy Networks' response is summarised in Table 5 below.

**TABLE 5 – OTHER COMMENTS ON THE PROPOSALS FROM STATUTORY BODIES AND INTERESTED GROUPS**

Stakeholder	Submission	Response
<b>Canal and River Trust (2)</b>	The Trust's adopted code of practice for service crossings, such as overhead power lines, is to be placed under the canal.	SP Energy Networks will continue to discuss its proposals with the Canal and River Trust regarding the need to place the proposed line underground where it crosses the Montgomery Canal..
<b>Oswestry Rural Parish Council (14)</b>	The council noted that, at this time, it had no comment on the proposals.	SP Energy Networks notes this comment.



Stakeholder	Submission	Response
<b>Shropshire Wildlife Trust (15)</b>	This consultee raised the possibility of disturbance to species during the construction phase of the project.	SP Energy Networks has taken these likely impacts into account by having regard to known records data and avoiding protected species and habitats and avoiding such sites in identifying the proposed line route. Further avoidance measures during the construction phase will be factored into mitigation measures.
<b>NFU (21)</b>	This response raised points about compensation for farmers in the area and asked SP Energy Networks to ensure any compensation reflects disturbance caused.	Compensation will be a matter to be negotiated in agreeing land rights with individual landowners and occupier.
<b>MoD (23)</b>	This consultee stated that they had no comments on the project but asked to be kept informed as the proposals progressed.	SP Energy Networks notes this comment.
<b>Shropshire Council (28)</b>	Shropshire Council consider that the reinforcement will support growth of a number of market towns and villages in North Shropshire, and so the Council broadly supports the principle of the proposed development. The wood pole design is one that is relatively common in the rural landscape near settlements and farmsteads. More explanation should be given to why Corridor options 1 and 4 were scoped out at an earlier stage. The final report should explain the rationale for retaining flexibility between the red and blue (Options 2 and 3) corridors. It would also be helpful to show sites of local landscape and visual interest, as has been done for local heritage sites.	<p>SP Energy Networks is pleased to receive the support for this project and note the Council's comments regarding the use of the wood pole.</p> <p>The corridor options 1 and 4 were scoped out at an earlier stage because following the mapping of the constraints, it appeared that these options were longer and more constrained by designated sites which resulted in a narrowing of the corridors presenting less flexibility for changes at later design stages. As such, SP Energy Networks concluded there was no benefit in taking these options forward for assessment against the more direct options 2 and 3.</p> <p>The Updated Line Route report includes reference to designated walks and cycle rides possibly affected by the proposed line route.</p>

## FACE-TO-FACE CONVERSATIONS AT EVENTS ON OTHER COMMENTS ON THE PROPOSALS

- 4.16** In terms of the feedback expressed at the public events on other comments, these focused on putting the overhead line underground, impacts of property prices and perceived health impacts. SP Energy Networks' specialists at the events were able to answer these questions and consultees were advised to also submit their comments in writing.

## COMMENTS ON THE CONSULTATION

- 4.17** Feedback from local people on the way in which the consultation was managed and SP Energy Networks' response is summarised in Table 6 below.

**TABLE 6 – COMMENTS ON OUR CONSULTATION**

Project ID	Submission	Response
4	<p>This respondent asked why the public events took place in the same week – especially as this was the final week before the school holiday, when many people go on holiday.</p>	<p>The dates of our consultation zone were carefully considered and agreed with Shropshire Council. They were aimed at ensuring as many people as possible could attend and therefore avoided the school holidays – the most popular time for people to go away.</p> <p>SP Energy Networks recognises that not everyone will be able to attend events, regardless of when they are held. To ensure people could still fully participate in the consultation, all information was available online and in libraries in the area. SP Energy Networks also ran a public enquiry line that people could ring to find out more information.</p> <p>We will consider feedback on the timing of our events ahead of the next stage of consultation.</p>
12	<p>This consult felt that SP Energy Networks had not sufficiently consulted with landowners.</p>	<p>Consultation with landowners plays an important role in the development of projects like the project to reinforce the North Shropshire electricity network.</p> <p>SP Energy Networks develops its initial proposals before identifying landowners. Consultation will then be carried out with landowners and their views taken in to account as the proposals develop.</p>
13	<p>This response stated that there was a good window of consultation.</p>	<p>Positive feedback on our consultation is really useful and helps us to assess the decisions we made when planning the consultation.</p> <p>SP Energy Networks will consider all feedback on how it ran the Stage One consultation when planning the next stage.</p>
14	<p>This respondent felt the consultation events gave residents a good opportunity to ask questions and found the Whittington event very informative.</p>	<p>Positive feedback on our consultation is really useful and helps us to assess the decisions we made when planning the consultation.</p> <p>SP Energy Networks will consider all feedback on how it ran the Stage One consultation when planning the next stage.</p>

Project ID	Submission	Response
18	This response had concerns that the consultation period was not long enough.	<p>SP Energy Networks based its consultation period on experiences from other projects and in discussion with Shropshire Council.</p> <p>It's considered that 10 weeks is sufficient for people to participate in the consultation. SP Energy Networks ensured that all materials were available at the beginning of the consultation to allow people the full time to consider the proposals.</p>
20	This respondent believed that the consultation had been run very efficiently.	SP Energy Networks will consider all feedback on how it ran the Stage One consultation when planning the next stage
25	This response stated that the event on 19 July at Hordley and Bagley Village Hall was excellent.	SP Energy Networks will consider all feedback on how it ran the Stage One consultation when planning the next stage
35	This consultee would have preferred SP Energy Networks to provide a face-to-face meeting.	<p>SP Energy Networks understands that some people would prefer face-to-face meetings to discuss individual concerns. However, a balance must be found and a practical approach to consultation taken.</p> <p>SP Energy Networks held four consultation events in the area to give local people an opportunity to conduct face-to-face conversations. It also ran a freephone enquiry line where residents could have questions answered about the proposals.</p>
39	This consultee would have preferred SP Energy Networks to provide a face-to-face meeting.	<p>SP Energy Networks understands that some people would prefer face-to-face meetings to discuss individual concerns. However, a balance must be found and a practical approach to consultation taken.</p> <p>SP Energy Networks held four consultation events in the area to give local people an opportunity to conduct face-to-face conversations. It also ran a freephone enquiry line where residents could have questions answered about the proposals.</p>
41	This response stated that the Wem Town Hall event was extremely helpful.	SP Energy Networks will consider all feedback on how it ran the Stage One consultation when planning the next stage

Project ID	Submission	Response
44	This respondent felt that landowners should be better consulted on the plans.	<p>Consultation with landowners plays an important role in the development of projects like the project to reinforce the North Shropshire electricity network.</p> <p>SP Energy Networks develops its initial proposals before identifying landowners. Consultation will then be carried out with landowners and their views taken in to account as the proposals develop.</p>

4.18 The feedback received from statutory bodies and interested groups on how the consultation was run and SP Energy Networks’ response is summarised in Table 7 below.

**TABLE 7 – COMMENTS FROM STATUTORY BODIES AND INTERESTED GROUPS ON OUR CONSULTATION**

Stakeholder	Submission	Response
<b>Whittington Parish Council (1)</b>	This parish council questioned the decision to begin consultation at the preferred line route stage and felt that the decision of where the new line will go had already been taken.	<p>SP Energy Networks’ preferred line route and options, presented at Stage One Consultation, was the result of detailed survey and planning work. The Project Update 1 newsletter made reference to this previous work and technical documents explaining this work were available on the project website and at libraries in the project area.</p> <p>SP Energy Networks presented its proposals at a stage where local people could have a detailed enough explanation of them to be able to provide clear feedback that could influence the design or location of the preferred line route.</p> <p>Residents and stakeholders were invited to comment on this earlier work and SP Energy Networks would have regards to this. All decisions remained open to influence by feedback during the consultation.</p>
<b>Shropshire Wildlife Trust (15)</b>	This consultee advised also speaking to the Meres and Moses Landscape Partnership.	SP Energy Networks had contacted this organisation as part of its original stakeholder mailing.
<b>NFU (21)</b>	The NFU advised regular meeting with their members.	SP Energy Networks will continue to consult with people in the area. As the proposals develop, this will include consultation with landowners. SP Energy Networks will also continue to consult with interest groups, like the NFU.



Stakeholder	Submission	Response
<b>Shropshire Council (28)</b>	It is considered that the distribution of information and consultation documents, alongside the community meetings held, have provided an adequate basis for consulting local communities on the proposals.	SP Energy Networks notes the supportive feedback provided.

### FACE-TO-FACE CONVERSATIONS AT EVENTS

- 4.19 Conversations at events about SP Energy Networks’ approach to consultation were broadly supportive and there was a general agreement that the consultation was carried out well.
- 4.20 SP Energy Networks notes the general level of support provided in the comments received.

### FEEDBACK FROM LANDOWNERS

- 4.21 During the consultation owners and occupiers were encouraged to provide feedback in writing giving particular regard to the potential implications of the proposals on their land so that it can be used to inform and develop the next stage of its proposals.
- 4.22 SP Energy Networks understands the land in the North Shropshire area is good agricultural land, and this was confirmed by many attendees at the events and as expected one of the main subjects raised by owners and occupiers was the impact that a new wooden pole supported overhead line would have on their agricultural practices. Their concerns related to their ability to farm around poles and stays and under an overhead line with the types of agricultural machinery being used in this area. In many cases the information brought forward by the owners and occupiers requires Manweb to undertake further studies.
- 4.23 Other concerns raised by interested parties included the work which was previously undertaken by the Environment Agency (EA) along the River Perry and the implications this has on water levels along sections of its preferred route and also the existence of other underground infrastructure such as Gas and Oil pipelines. The impact of the line on the value of their property and the potential sterilization of future business interests was also mentioned. These concerns will also require further investigation by SP Energy Networks.
- 4.24 In respect of comments on the preferred route, a number of helpful suggestions were raised on alternative line routes and owners and occupiers understood the need case for the North Shropshire Connection. A number have already consented to SP Energy Networks undertaking non-intrusive survey works. SP Energy Networks is also continuing to discuss proposals further with landowners and occupiers.

## 5. CONCLUSIONS AND NEXT STEPS

### CONCLUSIONS

- 5.1 The Stage One Consultation ran between 29 June 2016 and 9 September 2016 and introduced the Preferred Line Route and Options. Following the approach set out in the Approach to Stage One Consultation resulted in a well-attended consultation that generated a significant amount of useful feedback on the proposals. From the information provided, many members of the public provided detailed feedback as did technical stakeholders.
- 5.2 In response to the above approach, feedback was received both face to face at the exhibitions and via feedback forms and letters. A total of 68 written feedback responses were received from the public and stakeholders.
- 5.3 Key issues for line design influenced a proposed route (see figure 4), which is being published in Project Update Two in November 2016. The key issues identified, included:
- **The likely local environmental constraints affecting Section 2 (Hordley).** SP Energy Networks used this feedback to review options, and identified a preference for a new Section 2A, the evaluation of which is almost complete. If there are any changes to this section, we'll let people know. This route supported retaining Section 1 (Babbinswood), as opposed to following the line of a former tower line.
  - **Comments near Section 3 (Cockshutt), including likely visual impacts in the area from property owners.** As a result of this feedback SP Energy Networks decided to follow a more southerly route. This is further away from Cockshutt and avoids greater impacts on any single property in the area.
  - **Concerns were raised about the proximity of the new overhead line in Section 4 (Noneley), and suggested alternatives: to use the existing 33kV overhead line; or identify a new line route north of Noneley.** As the existing line cannot be upgraded, and a parallel route would be less preferable for visual impact reasons, we looked at replacing the existing 33kV line with the new 132kV line and installing the 33kV line along the preferred route. However, the likely low level of impact on the landscape character to the south of Noneley of the new 132kV line would not be very different to that of a 33kV overhead line, whereas, it would to the north. To reduce any likely visual impacts, the updated line has been moved further south from properties in Noneley. As part of the consultation, SP Energy Networks has spoken to bodies responsible for safeguarding Sleaf Airfield and received no objection to the proximity of the line route to the airfield.
  - **Baggy Moor and River Perry area and ponds in the central area of the line route, which are important bird feeding areas and the likely impacts on farming operations in the Hordley area.** The changes we have made to the line route have taken these comments into account.
  - **Earlier work carried out and whether the line could be placed underground.** SP Energy Networks' assessment work to date shows that the likely level of landscape and visual impact wouldn't justify placing any sections of the overhead line underground. This position will be reviewed in light of further environmental assessment work. An overhead wood pole trident line allows us to find the right balance between minimising environmental impacts and ensuring the new line offers value for money, which is in the interest of bill payers.

## NEXT STEPS

- 5.4** SP Energy Networks will publish Project Update Two in autumn 2016. This newsletter will summarise the key issues raised during the consultation and include a plan of the proposed line route. It will be issued to residents in the consultation zone and stakeholders.
- 5.5** Stage Two Consultation will take place in 2017 and will present a detailed route, including wood pole positions as well as details on construction requirements and traffic management. Stage Two will be a formal consultation process as part of the application for a Development Consent Order. As part of this consultation, communities, groups and statutory consultees will be contacted to provide feedback on the project. This will be reviewed, assessed and considered prior to the application being submitted.
- 5.6** Stage Two Consultation will also include consultation on the required Environmental Impact Assessment (EIA) work. This consultation will help shape our project proposals from an environmental impact perspective and will enable us to prepare an Environmental Statement (ES) which is a core component of the DCO application.

# **APPENDICIES**

**Stage One Consultation Feedback Report  
November 2016**

## **6. APPENDICIES**

**APPENDIX 1 – PROJECT UPDATE 1 NEWSLETTER**

**APPENDIX 2 – STAGE ONE CONSULTATION STAKEHOLDER LIST**

**APPENDIX 3 – POSTER SENT TO TOWN AND PARISH COUNCILS**

**APPENDIX 4 – LETTER SENT TO LANDOWNERS IN THE CONSULTATION ZONE**

**APPENDIX 5 – FEEDBACK FORM**

**APPENDIX 6 – ACKNOWLEDGEMENT LETTER**

**APPENDIX 7 – PROJECT WEBSITE**

**APPENDIX 8 – EVENT SUMMARIES**

**APPENDIX 9 – EVENT PANELS**



# **APPENDIX 1**

**PROJECT UPDATE 1 NEWSLETTER**

**Stage One Consultation Feedback Report**

**November 2016**

---

## Reinforcement to North Shropshire Electricity Distribution Network: 132,000 volt wood pole overhead line from Oswestry to Wem

---



---

### Have your say on plans for a new electricity line for North Shropshire

---

- New overhead line needed to support and enable growth in North Shropshire
  - Communities have important role in developing the line route
  - Stage One Consultation open from **29th June** to **9th September 2016**
- 

SP Energy Networks is planning to invest £18m in order to support and enable growth across North Shropshire. This investment is to reinforce the electricity distribution network by constructing an overhead 132,000 volt wood pole line from Oswestry substation, located at the A5/A495 roundabout, to Wem substation, located on Ellesmere Road on the western side of Wem.

This line will provide capacity to support development on land allocated for new jobs and homes in Oswestry, Whitchurch and Wem in current planning forecasts to 2026. And it will attract future business and housing investment across North Shropshire through to and beyond 2036. The new overhead line will reinforce the existing 33,000 volt electricity distribution network by increasing the capacity available throughout North Shropshire.

#### Route for the new line

We need to find a suitable route for the new electricity distribution line. Feedback from the local community will play an important role in assisting us to establish the final line route.

We have carried out a considerable amount of investigatory work to look at and consider the location of communities, heritage features and other sensitive areas. From these investigations, we have developed a number of proposed routes that seek to either avoid or mitigate impacts on these areas.

We now wish to open a consultation to enable people living in the area to have their say about our proposals. This is stage one of a two stage consultation. We will use your feedback together with our assessments to establish the most appropriate route in order to reinforce the North Shropshire electricity distribution network. Your views really can influence our work, so we strongly encourage you to take part in this consultation process.

---

“These proposals are good news. Shropshire Council has been pressing for investment in North Shropshire infrastructure, including Whitchurch, for a number of years. With the new homes and employment sites proposed, we are going to need the extra power. The North Shropshire reinforcement project will help our area realise its economic ambitions and ensure that we continue to enjoy a reliable electricity supply.”

Councillor Steve Charmley,  
Deputy Leader and Portfolio Holder for Business and Economy

### COMMUNITY EVENTS

---

We are holding events in the local area for people to view maps and to talk to our team.

See the back page for dates, times and locations.

## **APPENDIX 2**

### **STAGE ONE CONSULTATION STAKEHOLDER LIST**

**Stage One Consultation Feedback Report  
November 2016**

<b>Statutory stakeholders we are contacting</b>	
<b><i>Parish councils directly affected within the consultation zone</i></b>	Health & Safety Executive
Baschurch Parish Council	West Midlands Strategic Health Authority
Cockshutt Parish Council	Shropshire Fire & Rescue Authority
Hordley Parish Council	Police and Crime Commissioner for West Mercia
Loppington Parish Council	Equality and Human Rights Commission
Oswestry Rural Parish Council	The Homes and Communities Agency (HQ)
Oswestry Town Council	The Homes and Communities Agency (Midlands)
Wem Rural Parish Council	Crown Estates Commissioners
Wem Urban Parish Council	The Coal Authority
West Felton Parish Council	Ofgem
Whittington Parish Council	Marches Local Enterprise Partnership
<b><i>Parish councils with areas within the consultation zone</i></b>	Gas and Electricity Markets Authority (GEMA)
Ellesmere Rural Parish Council	Ofwat
Myddle, Broughton and Harmer Hill Parish Council	Melverley Internal Drainage Board
Prees Parish Council	SP Manweb
Ruyton-XI-Towns Parish Council	SP Distribution Limited
Sellattyn and Gobowen Parish Council	National Grid Electricity Transmission Plc
Welshampton and Lyneal Parish Council	National Grid Plc
<b><i>Additional parish councils included in the consultation</i></b>	National Grid Gas Plc
Whitchurch Town Council	ESP Electricity Limited
Whitchurch Rural Parish Council	Independent Power Networks Limited
<b><i>Other statutory stakeholders</i></b>	The Electricity Network Company
Planning Inspectorate	Western Power Distribution (South Wales) Plc
Shropshire Council	Northern Powergrid
Natural England	Energetics Gas Limited
The Environment Agency	Energetics Electricity Limited
The Environment Agency (Midlands Region)	ES Pipelines Ltd

The Forestry Commission (West Midlands)
The Forestry Commission (HQ)
Historic England
Historic England (Birmingham office)
Design Council CABE
Highways England
Shropshire Council Highways
The Civil Aviation Authority
Network Rail
West Midlands Passenger Transport Executive
Transport Focus
The Disabled Persons Transport Advisory Committee
The Office of Rail Regulation
Network West Midlands (Integrated Transport Authority)
Canal and River Trust

ESP Connections Ltd
ESP Networks Ltd
ESP Pipelines Ltd
Fulcrum Pipelines Limited
GTC Pipelines Limited
Independent Pipelines Limited
LNG Portable Pipeline Services Limited
Quadrant Pipelines Ltd
SSE Pipelines
Scotland Gas Networks Plc
Southern Gas Networks Plc
Royal Mail Group
BT Plc
NATS En-Route Safeguarding

### Hard to reach groups

Lakelands School, Sports & Language College	Shropshire Housing Alliance
The Thomas Adams School	Meres & Moses Housing Association
The Marches School	Shropshire Infrastructure Partnership
Positive Activities Team (Shropshire Youth)	Shropshire Rural Community Council
Shropshire Federation of Young Farmers Clubs	Shropshire Disability Network
Shropshire Youth Association	Shropshire Voluntary and Community Sector Assembly
Age UK Shropshire, Telford & Wrekin	Tourism Service, Shropshire Council
Shropshire Association of Senior Citizen Forums	Shropshire Tourism

### Other stakeholders to contact

Member of Parliament for North Shropshire	Meres and Mosses Landscape Partnership
Leader of Shropshire Council	Shropshire Wildlife Trust



Shropshire Council Portfolio Holder for Planning	The Woodland Trust
County Councillor for Gobowen, Selattyn & Weston Rhyn	Open Spaces Society
County Councillor for Gobowen, Selattyn & Weston Rhyn	Campaign to Protect Rural England (CPRE)
County Councillor for Oswestry East	The RSPB
County Councillor for Oswestry East	Offa's Dyke Association
County Councillor for Prees	National Trust
County Councillor for Ruyton and Baschurch	Highways Agency Historical Railways Estate
County Councillor for St Oswald	Sleep Airfield, Shropshire Aero Club
County Councillor for The Meres	Shropshire Chamber of Commerce
County Councillor for Wem	Oswestry Rotary Club
County Councillor for Wem	Shropshire Women's Institute
County Councillor for Whitchurch North	Shrewsbury and District Riding Club
County Councillor for Whitchurch North	Shropshire Peregrine Group
County Councillor for Whitchurch South	Whittington History Society
County Councillor for Whittington	Wem Civic Society
Department for Communities and Local Government	Shropshire Borders District Scouts
Department for Environment, Food and Rural Affairs (Defra)	NFU Shropshire
Department of Energy and Climate Change	Country Land and Business Association Limited
Secretary of State for Defence	The Ramblers - Shropshire
Defence Infrastructure Organisation	Federation of Small Businesses

## **APPENDIX 3**

**POSTER SENT TO TOWN AND PARISH COUNCILS**

**Stage One Consultation Feedback Report  
November 2016**

# Have your say:

## on plans for a new electricity line for North Shropshire



Public events – come along to find out more:

DATE	LOCATION	TIME
Wednesday 13th July	<b>Whittington Community Centre,</b> Oswestry SY11 4BS	5.00pm – 8.00pm
Thursday 14th July	<b>Wem Town Hall,</b> High Street, Wem SY4 5DG	3.30pm – 7.30pm
Monday 18th July	<b>Cockshutt Millennium Hall,</b> Cockshutt SY12 0JQ	3.30pm – 7.30pm
Tuesday 19th July	<b>Hordley and Bagley Village Hall,</b> Lower Hordley, Nr Ellesmere SY12 9BQ	3.30pm – 7.30pm

Documents and maps with more information on our website and at the following locations:

**Wem Library**  
High Street, Wem, Shrewsbury SY4 5AA

**Cockshutt Millennium Hall**  
Shrewsbury Road, Cockshutt SY12 0JQ

**Oswestry Library**  
Arthur Street, Oswestry SY11 1JN

**Wem Town Council**  
Edinburgh House, New Street, Wem SY4 5DB

**Ellesmere Library**  
Fullwood House, Victoria Street, Ellesmere SY12 0AA

**Whitchurch Library**  
High Street, Whitchurch SY13 1AX

### Send us your feedback:

Online at [www.spenergynetworks.co.uk/north\\_shropshire](http://www.spenergynetworks.co.uk/north_shropshire)

At one of our events

Via email to [enquiries@spennorthshropshire.co.uk](mailto:enquiries@spennorthshropshire.co.uk)

Write to us via FREEPOST SPEN NSR

**Any questions?**

Give us a call on

**0800 804 4666**

## **APPENDIX 4**

**LETTER SENT TO LANDOWNERS IN THE CONSULTATION ZONE**

**Stage One Consultation Feedback Report  
November 2016**

SP Energy Networks  
North Shropshire Reinforcement  
3 Prenton Way,  
Prenton  
CH43 3ET

28th June 2016

Our Ref: [NSR 120.1]

Dear [Insert]

**Reinforcement to North Shropshire Electricity Distribution Network: Proposed 132,000 volt Wood Pole Overhead Line from Oswestry to Wem**

SP Energy Networks is writing to you on behalf of SP Manweb plc (SPM), the holders of the electricity distribution licence for North and Mid Wales, Merseyside, Cheshire and North Shropshire and as part of its licence SPM distributes electricity for the purpose of giving supply to any premises or to enable a supply to be so given.

SP Energy Networks is proposing a new line to operate at 132,000 volts (132kV) which will reinforce the electricity distribution and supply network across North Shropshire. The new line will connect the existing electricity substations at Oswestry and Wem. We have identified potential routes for the new line and you are being written to because your land has been considered in part of our proposals. In some instances, you may already have had a visit by members of our Land Rights team as we seek to ascertain landownership and occupation details.

SP Energy Networks will be holding consultation events on its proposals and the dates, times and venues of these public events are contained within the enclosed newsletter. The public consultation events are an opportunity for any member of the public to attend as part of the process of seeking views on the proposed route options. In addition, we will be collating land rights information in order to identify the contact details of: landowners, occupiers (if appropriate); and any other party that may have an interest in the land affected. The consultation period commences on 29th June 2016 and will be running until 9th September 2016.

Your feedback is important to us and may, where appropriate, assist SP Energy Networks with the further refinement of its proposals prior to the submission of its application to the Planning Inspectorate. We would very much appreciate hearing your views on our proposals and we would welcome the opportunity to meet with you in order to discuss your views at one of the scheduled consultation events.



If you are unable to attend any of the listed events, the proposals will be made available on the project website [www.spenergynetworks.co.uk/north\\_shropshire](http://www.spenergynetworks.co.uk/north_shropshire) or may be viewed at the following locations:

Oswestry library - Arthur Street, Oswestry, Shropshire SY11 1JN

Wem library - High Street, Wem, Shrewsbury, Shropshire SY4 5AA

Ellesmere library - Fullwood House, Victoria Street, Ellesmere, Shropshire SY12 0AA

Whitchurch library - High Street, Whitchurch, Shropshire SY13 1AX

Cockshutt Millenium Hall - Shrewsbury Road, Cockshutt, Ellesmere, Shropshire SY12 0JQ

Wem Town Council - Edinburgh House, New Street, Wem, Shropshire SY4 5DB

Feedback may be returned to us by mail using FREEPOST to the address: FREEPOST SPEN NSR.

Or, please contact our FREEPHONE telephone number on: 0800 804 4666 to discuss matters further.

Yours sincerely

A black rectangular box redacting the signature of Steven Edwards.

Steven Edwards

Senior Environmental Planner

SP Energy Networks

Enc.

# **APPENDIX 5**

## **FEEDBACK FORM**

**Stage One Consultation Feedback Report  
November 2016**

---

## Reinforcement to North Shropshire Electricity Distribution Network: 132,000 volt wood pole overhead line from Oswestry to Wem

---

### Have your say on plans for a new electricity line for North Shropshire

The North Shropshire Reinforcement project is a proposal for a new electricity line which is designed to use approximately 12m high wood poles between substations in Oswestry and Wem. The line will provide capacity to support development in allocated land for new jobs and homes in North Shropshire.

We need to find a route for the new line and are now announcing a preferred route along with route options. You can find the details of our proposals in our **Project Update One – Summer 2016** or online at [www.spenergynetworks.co.uk/north\\_shropshire](http://www.spenergynetworks.co.uk/north_shropshire) where you can also fill in this form online.

We want to hear what people living in the area have to say about our proposals. Your opinions really can influence our work so we hope you take part. The more detailed your comments can be, including referencing a location or particular section of the preferred line route or options, the more helpful this is in developing our proposals.

**Our consultation is open between 29th June and 9th September. Please provide your comments by this date.**

---

#### About you

Name: \_\_\_\_\_

Address: \_\_\_\_\_

Post code: \_\_\_\_\_

E-mail: \_\_\_\_\_

Data privacy note: SP Energy Networks is committed to respecting your privacy and to complying with all applicable data protection and privacy laws. Your information may be disclosed to our service providers, other SP Energy Networks companies, third party service providers, or advisors who provide services to us, and to the Planning Inspectorate, and any relevant local planning authority (LPA).

---

**Question 1:** We've considered options for line routes and from this we've identified a preferred line route, with options in some sections. Do you have any comments on the location and limits of this preferred line route or its options?

**Question 2:** Do you have any comments on the likely environmental impacts of the preferred line route and its associated construction works, such as lay-down areas or transport?

---

---

---

---

---

---

---

---

---

---

**Question 3:** Do you have any other comments on our current proposals and our previous work to reach this point, including any impacts it could have that you think we should consider?

---

---

---

---

---

---

---

---

---

---

**Question 4:** Do you have any comments on how we are carrying out our consultation?

---

---

---

---

---

---

---

---

---

---

#### **What happens to your feedback?**

Following the close of our consultation, we'll review our proposals in light of the feedback we've received. Using these comments, and our own assessments, we'll then develop a more detailed design for the connection – including where individual wood poles could be sited.

We'll carry out another consultation in 2017 on these more detailed plans to provide another opportunity for you to comment and influence our proposals.

---

#### **Contact us:**

Visit our website: [www.spenergynetworks.co.uk/north\\_shropshire](http://www.spenergynetworks.co.uk/north_shropshire)

Email us: [enquiries@spennorthshropshire.co.uk](mailto:enquiries@spennorthshropshire.co.uk)

Give us a call: 0800 804 4666

Write to us: FREEPOST SPEN NSR

---

## **APPENDIX 6**

### **ACKNOWLEDGEMENT LETTER**

**Stage One Consultation Feedback Report  
November 2016**



Community relations team

Freepost SPEN NSR

Freephone: 0800 804 4666

Email us: [enquiries@spennorthshropshire.co.uk](mailto:enquiries@spennorthshropshire.co.uk)

[www.spenergynetworks.co.uk/north\\_shropshire](http://www.spenergynetworks.co.uk/north_shropshire)

Dear,

Thank you for taking part in SP Energy Network's consultation on the North Shropshire Reinforcement project.

The feedback we receive is really important and we look at everything sent to us. We consider your comments in the context of all of the feedback we receive. For this reason, we do not respond to each comment individually but will summarise the feedback in a consultation report, which we'll publish after the consultation.

This report will give everybody the opportunity to see all of the comments we have received, what the local community felt was important and how we are taking these views into account. We'll publish this report after our consultation closes.

Once again, thank you for taking the time to provide your comments about the project.

Yours sincerely,

**Community Relations Team**

SPEN North Shropshire Reinforcement Project



# **APPENDIX 7**

## **PROJECT WEBSITE**

**Stage One Consultation Feedback Report  
November 2016**

## Home page

Investment & Innovation
Investment Map
Scotland
Investment in England & Wales
Western HVDC Link
Willaston
Wylfa Newydd, Anglesey
Investment in North Shropshire Electricity Network
Our Proposals
Our Consultation
Useful Documents
Community Consultation
Innovation

## Investment in North Shropshire Electricity Network

SP Energy Networks is planning to invest £18m to support and enable growth across North Shropshire.

A new wood pole overhead line is now proposed to reinforce the electricity network. The line will run from **Oswestry substation**, located at the A5/A495 roundabout, to **Wem substation**, located on Ellesmere Road on the western side of Wem.



This line will provide capacity to support development on land allocated for **new jobs and homes in Oswestry, Whitchurch and Wem**. It will attract future business and housing investment across North Shropshire through to and beyond 2036. The new overhead line will reinforce the existing network by increasing the capacity available.

We're consulting on our proposals and want you to give us your feedback on the project so you can influence the development of our work.

### Your Views Count!

Your feedback can influence our work and we want to hear from you on our latest proposals. Find out how to take part in our consultation.

### Contact Us

Email us: [Click here](#)  
Give us a call: 0800 804 4666  
Write to us: FREEPOST SPEN HSR

## Our Proposal

### What we are proposing



- [Click here to view a larger version of the map in pdf format](#)

Additional maps can be found on the [Useful Documents](#) page.

The new connection will be built using wooden poles that look like many of the electricity lines already in North Shropshire - each about 12 metres high. We think the wooden pole design gives us good opportunity to build the connection in a way that has as little effect on the area as possible.

### Route for the new line

We need to find a suitable route for the new electricity distribution line. Feedback from the local community will play an important role in assisting us to establish the final line route. We have carried out a considerable amount of investigatory work to look at and consider the location of communities, heritage features and other sensitive areas.

From these investigations, we have developed a number of proposed routes that seek to either avoid or mitigate impacts on these areas. We now wish to open a consultation to enable people living in the area to have their say about our proposals. This is stage one of a two stage consultation.

We will use your feedback together with our assessments to establish the most appropriate route in order to reinforce the North Shropshire electricity distribution network. Your views really can influence our work, so we strongly encourage you to take part in this consultation process.

### Details of the planning process

The North Shropshire reinforcement project is a **Nationally Significant Infrastructure Project (NSIP)**. These are projects which are considered to have national importance, such as rail lines, power stations and electrical connections. As such, the decision on whether to grant consent for them sits with central government, not with the local authority.

The Planning Act 2008 sets out the process for these projects and requires SP Energy Networks to make an application for consent to the Planning Inspectorate. They will review the application and make a recommendation to the relevant Secretary of State, who has the final say in whether to grant consent. The Secretary of State for Energy and Climate Change will make the decision on the North Shropshire Reinforcement project.

Consultation is a central part of the Planning Act process so that local communities, the local authority and other relevant groups can influence and take part in the development of proposals prior to application. In addition to this consultation, we will hold another stage in 2017, when there will be further opportunity to have your say.

## Alternative 132,000 volt designs

There are a range of different technologies available for the new line, including steel pylons, heavy duty double wood poles and single wood pole Trident designs.

We also considered placing the new line entirely underground. However, this was discounted due to cost and not being the technically preferred option. Also, overhead lines are not generally considered incompatible in rural areas such as that covered by this project.



### Wood pole Trident design

Following a review of the available options for this project, we are proposing to use a wood pole Trident design which would comprise mostly single poles. We consider that this design will have less of an impact on the area compared to the others and will provide a better fit within the local landscape.

This design offers more flexibility in how we route the line than the other options, which helps in reducing potential impacts on important sites, communities and properties. A Trident design also assists us in addressing landowner requests when determining the best location for poles on site.

As we develop our proposals the design will include construction areas, about every 5km along the line, and 'cablepulling' points. This is where conductors (the wires that carry the electricity) are strung onto the wood poles by a winch or tractor and tensioner with a mobile elevated platform. Construction access would be via local roads, farm tracks and field gates. Construction vehicles would typically be regular 20 tonne lorries. The installation would have an overall construction phase of approximately six months.

[Back to top](#)

## Why our proposals are needed

### The importance of the North Shropshire reinforcement project

The current local electricity distribution network has been supplying North Shropshire with electricity reliably for many years. But with future growth plans in the region planned up to 2026 and beyond, we need to reinforce the network and provide additional capacity.

"These proposals are good news. Shropshire Council has been pressing for investment in North Shropshire infrastructure, including Whitchurch, for a number of years. With the new homes and employment sites proposed, we are going to need the extra power. The North Shropshire reinforcement project will help our area realise its economic ambitions and ensure that we continue to enjoy a reliable electricity supply."

Councillor Steve Charmley, Deputy Leader and Portfolio Holder for Business and Economy

[Back to top](#)



## Our work so far

Being aware of the need to reinforce the existing electricity distribution network to support increased demand for electricity in the area, we have investigated a number of route options.

It is essential that we determine the most appropriate route for the proposed wood pole line and, in so doing, seek to minimise the impact on the area for landowners and the local communities.

We have undertaken a wide range of assessments to find options that we think best achieve this.

<b>Step one:</b> Where to reinforce the network	During 2015, SP Energy Networks considered a number of alternative overhead line routes from other substations at Legacy and Marchwiel near Wrexham, Crewe and Shrewsbury. These alternatives, however, have been discounted due to technical suitability, costs and potential increased environmental impacts. The route from Oswestry to Wem was considered most suitable.
<b>Step two:</b> Choosing route corridors	<p>In the latter part of 2015 and early 2016, we considered the location of villages and towns, the landscape, cultural heritage and other environmental sensitivities to develop broad route corridors (broad ribbons of land) which we could route the line within.</p> <p>From our initial routing work, we then identified two route corridors from Oswestry to Wem, each up to 1km wide, and assessed them to see which had the least impact overall. We have based our consultation zone on an area around these two route corridors to give local people in this area the opportunity to be involved.</p>
<b>Step three:</b> Identifying line routes	More recently in 2016, we have carried out further work within the overall preferred corridor to identify and then consider alternative line route options. These alternative line routes are 100 metres wide at this stage, which enables flexibility for a more refined design at the next stage of our work. These line routes also include the land needed for constructing the overhead line (such as temporary construction roads and lay-down areas).
<b>Step four:</b> Choosing a preferred line route	We're now consulting with local communities and specialist bodies (such as heritage and environmental groups) to seek their comments on our work and the options, including the preferred option we have identified and associated construction areas. This feedback will help us check the decisions we have made and provide information to develop a detailed design.

[Back to top](#)

## What we need to know from you

Your feedback has an important role to play in establishing the best route for the new line.

We've done lots of work to identify routes and would now like your local knowledge and comments to check the decisions we've made and develop our proposals further.

We'd like you tell us what effects you think our proposals could have on the local area, such as farming, communities, the landscape, wildlife, ecology and anything else you consider important.

Specifically, we are consulting on:

- The preferred line route in terms of its location and limits
- The likely environmental impacts of the preferred line route and its associated construction works, such as storage areas for equipment i.e. lay-down areas, and transport
- The other line route options that have been considered
- Any other aspects of this project that you think SP Energy Networks should consider
- SP Energy Networks' approach to consultation

We'd like your comments on all of these things and would appreciate as much detail as you can provide. ([link to our consultation](#))

## Next steps

Using your **feedback** together with our own assessments we can identify a preferred line route that keeps any impacts as low as we can. We will review our proposals in line with the information we receive and develop them further. We will consult again in 2017 to get comments on a detailed design which will include the locations of the poles. This will be a statutory stage of consultation before making an application for planning permission.

## Project Timeline



## Our Consultation

Your feedback has an important role to play in establishing the best route for the new line.

Specifically, we are consulting on:

- The preferred line route in terms of its location and limits
- The likely environmental impacts of the preferred line route and its associated construction works, such as storage areas for equipment i.e. lay-down areas, and transport
- The other line route options that have been considered
- Any other aspects of this project that you think SP Energy Networks should consider
- SP Energy Networks' approach to consultation

The more detailed your comments can be, including referencing a location or particular section of the preferred line route or options, the more helpful this is in developing our proposals.

Our consultation is open from 29 June to 9 September - please submit your feedback before the closing date.

There are four ways to give your feedback:

### 1. Online feedback form

Complete the feedback form below and submit online.

### 2. Post feedback form

Download a PDF of the feedback form to print, complete, and post to our freepost address: FREEPOST SPEN NSR

- [Download feedback form](#)

### 3. E-mail

Send us an e-mail to: [enquiries@spenorthshropshire.co.uk](mailto:enquiries@spenorthshropshire.co.uk)

### 4. Write

Write to us using our freepost address: FREEPOST SPEN NSR

## What happens to your feedback?

Following the close of our consultation, we'll review our proposals in light of the feedback we've received. Using these comments, and our own assessments, we'll then develop a more detailed design for the connection - including where individual wood poles could be sited.

We'll carry out another consultation in 2017 on these more detailed plans to provide another opportunity for you to comment and influence our proposals.

### Consultation Dates

Our consultation is open for ten weeks from Wednesday 29 June to Friday 9 September.

### Community Events

**Wednesday 13th July**  
Whittington Community Centre,  
Oswestry SY11 4BS  
5pm - 8pm

**Thursday 14th July**  
Wem Town Hall,  
High Street,  
Wem SY4 5DG  
3.30pm - 7.30pm

**Monday 18th July**  
Cockshutt Millennium Hall,  
Cockshutt SY12 0JQ  
3.30pm - 7.30pm

**Tuesday 19th July**  
Hordley & Bagley Village Hall,  
Lower Hordley,  
Nr Ellesmere SY12 9BQ  
3.30pm - 7.30pm

### Where to Find Out More

We have published a number of technical documents and maps that can give you more information on our proposals. These are available on our website and at the following locations:

**Wem Library**  
High Street,  
Wem,  
Shrewsbury,  
Shropshire SY4 5AA

**Oswestry Library**  
Arthur Street,



## Online Feedback Form

### Question 1

We've considered options for line routes and from this we've identified a preferred line route, with options in some sections. Do you have any comments on the location and limits of this preferred line route or its options?

### Question 2

Do you have any comments on the likely environmental impacts of the preferred line route and its associated construction works, such as lay-down areas or transport?

### Question 3

Do you have any other comments on our current proposals and our previous work to reach this point, including any impacts it could have that you think we should consider?

### Question 4

Do you have any comments on how we are carrying out our consultation?

Shropshire,  
SY11 1JH

Ellesmere Library  
Fullwood House,  
Victoria Street,  
Ellesmere,  
Shropshire SY12 0AA

Cockshutt Millennium Hall  
Shrewsbury Road,  
Cockshutt,  
Ellesmere,  
Shropshire SY12 0JQ

Wem Town Council  
Edinburgh House,  
New Street,  
Wem,  
Shropshire SY4 5DB

Whitchurch Library  
High Street,  
Whitchurch,  
Shropshire SY13 1AX

### About You

\* Title:

\* Name:

\* Address:

\* Email:


I'm not a robot.




Privacy Policy

## Useful Documents

### North Shropshire Reinforcement Newsletter - Summer 2016

- [Click here to download](#) 

### North Shropshire Line Route Report - June 2016

- [Click here to download](#) 





### North Shropshire Reinforcement Options Report

- [Click here to download](#) 

### North Shropshire Reinforcement Route Corridor Options Report

- [Click here to download](#) 

### North Shropshire Reinforcement Maps

- [Download a map showing all sections](#) 
- [Download a map showing section 1](#) 
- [Download a map showing section 2 and 3](#) 
- [Download a map showing section 3 and 4](#) 

### Your Views Count!

Your feedback can influence our work and we want to hear from you on our latest proposals. Find out how to take part in our consultation.

### Contact Us

Email us: [Click here](#)  
Give us a call: 0800 804 4666  
Write to us: FREEPOST SPEN NSR

## **APPENDIX 8**

### **EVENTS SUMMARIES**

**Stage One Consultation Feedback Report  
November 2016**

## CONSULTATION EVENT SUMMARY

**Event:** Whittington Community Centre

**Route section:** Section One (east of Oswestry)

**Date/time:** Wednesday 13 July 2016, 5pm – 8pm

**Number of attendees:** 18

### **Overview:**

Visitors stayed for more than 20-30 minutes, having detailed conversations. Generally it was a very positive event with no major challenges against the proposals. Several people said they'd found the event very helpful. People generally were mainly interested in the sections of the route that were near their homes.

The main themes and issues raised included comments:

- identifying a preferred route from the options available in this consultation;
- on the chosen wood pole design;
- about transport and construction – including where else SPEN has built this type of pole;
- about removing existing lines crossed by the new one; and
- about how the poles would look from certain distances.

A small number of residents attended from the Babbinswood, Berghill Lane area, expressing their preference for the preferred line route in section one. It was their view that the preferred line route would have less visual impact.

### **Land rights:**

A number of landowners also attended. There was general acceptance of the preferred line route and Trident wood poles and discussions were held about site visits to mark out poles on their land.

### **Press:**

Two members of the press attended – from the Oswestry Advertiser and the Oswestry Border Chronicle.

### **Written feedback:**

One feedback form was submitted on the day of the event and several were taken away to complete and send back to the Freepost address.

Feedback Form Q1: preferred line route and options

A preference for the preferred line route to be taken forward was expressed and visitors felt the comparison of pole heights to mature trees was helpful. One concern was expressed about an existing National Grid line on one side and now this project's proposed lines on the other and the owners of this property discussed the apparent height of the wood pole at a distance of 250m which would appear small in the landscape.

#### **Feedback Form Q2: likely environmental effects, including construction effects**

One landowner indicated interest in favour of having a construction compound on his land. Residents from the Berghill Lane area said they were concerned about construction traffic on the narrow lane to their property as in their experience it's very tight even when a tractor drives down there.

#### **Feedback Form Q3: any other comments on the proposals**

Two visitors were concerned about the levels of EMFs surrounding their property. In response to their concerns on EMFs, they were provided with links to the ENA website.

#### **Feedback Q4: any comments on the consultation**

A local councillor said he thought the consultation event was run well and very helpful to people and said he would provide this as written feedback to the consultation.

Event images:



## Consultation event summary

**Event:** Cockshutt Millennium Hall

**Route section:** Section Three

**Date/time:** Monday 18 July 2016, 3.30pm – 7.30pm

**Number of attendees:** 30

### **Overview:**

The event was busy throughout the afternoon and evening. Of the four events, it was in this area that there was most concern due to the proximity of the preferred line route to Cockshutt.

The NFU's county advisor attended and was interested in being kept up to date on the project so he could provide details in his regular updates to members.

The main themes and issues raised included comments:

- on the preferred route and its proximity to the village;
- on option 3B;
- on the proposals' effect on wildlife, in particular on birds;
- on construction effects, in particular the effects on traffic on narrow lanes;
- about the need for the new line;
- about how the poles would look from certain distances; and
- about the consultation process and the role and influence of feedback.

### Land rights:

Several landowners attended – some had suggestions for where on their land equipment (including land compounds) could be sited and discussed in detail the varying suitability of areas of their land for this. Owners of a large area of land stated a preference for the preferred line route, while others supported a variation of option 3B.

### Press:

No members of the press attended today's event.

### Written feedback:

Four feedback forms were submitted on the day of the event and several were taken away to complete and send back to the Freepost address.

### **Feedback Form Q1: preferred line route and options**

A main theme was that people wanted the preferred line route to be further south. Some people suggested they had a preference for option 3B or a variation of 3B.

One landowner attended and requested that a straighter line between Bagley Marsh and Moor House Farm is investigated.



## Feedback Form Q2: likely environmental effects, including construction effects

One couple enquired about the effects of construction transport– in particular they were concerned about large vehicles coming down the narrow Stanwardine Lane just south of Cockshutt.

One landowner discussed in detail suitable locations for a construction compound on his land and talked through the reasons why. He mainly wanted to avoid his garden and paddock and instead cross arable fields. Two landowners talked about the indicative works compound is proposed in section 3 would not be suitable because of the wet land, flooding and peat in those areas.

## Feedback Form Q3: any other comments on the proposals

Some said they felt the route should be put underground. The reasons not to and the potential effects of this were explained.

Some asked about health considerations relating to EMFs and more information on the subject will be provided. One couple also asked if the wires would emit any noise.

Several visitors asked what the connection was needed for and the need case for the project was explained, but some people said they felt it wasn't required.

## Feedback Form Q4: any comments on the consultation

One visitor asked if the parish councils had been briefed on the project and the pre-launch briefing to councillors was explained. People also sought assurance that feedback would be considered and could genuinely influence the proposals.

## Event images:



## Consultation event summary

Event: Hordley and Bagley Village Hall

Route section: Section Two

Date/time: Tuesday 19 July 2016, 3.30pm – 7.30pm

Number of attendees: 11

### Overview:

Visitors discussed their concerns with members of staff from across all disciplines. People were mainly interested in finding out exactly how far the route would be from their homes and had concerns about the visual impact. A member of Hordley Parish Council attended to find out more about the project.

The main themes and issues raised included comments:

- on the preferred route and its proximity to properties;
- on the proposals' effect on ecology;
- on whether the proposals could be underground;
- about how the proposals may attract more local wind turbines;
- about how the poles would look from certain distances; and
- about the consultation process and the role and influence of feedback.

### Land rights:

Three landowners attended to talk about the plans (see more detail below).

### Press:

No members of the press attended the event.

### Written feedback:

One feedback form was submitted on the day of the event and a few were taken away to complete and send back to the Freepost address.

### Feedback Form Q1: preferred line route and options

The proximity of the route to the scattered residential properties between Lower Hordley and Bagley was a concern and it was suggested the route should be routed north of the ABP packaging facility where there are far fewer properties and further away from Bagley Marsh. Some people said they were concerned the preferred route 'splits Bagley in half'.

Some people had questions about the design, including pole height, the different types of poles to be used and spacing between them. They also asked about the construction process and lifetime of the poles.

**Feedback Form Q2: likely environmental effects, including construction effects**

Some people said they had concerns the proposals would impact on the ecology in the area and noted the presence of newts and toads. They were encouraged to provide detailed feedback on this.

**Feedback Form Q3: any other comments on the proposals**

Visitors asked if the proposals could be underground and the costs, construction details and maintenance relating to undergrounding were discussed and whether the proposals would have an effect on the sale of their property.

Three landowners attended who all currently had the preferred line route crossing their land. They discussed pole positions, including areas to avoid and made suggestions for where poles could go. They also raised upcoming surveys and compensation with the land rights representative. One landowner highlighted an area of flooding and the times of year to avoid construction and another talked about an irrigation system on his land which he'd want the line route to avoid.

**Feedback Form Q4: any comments on the consultation**

One visitor said it was good we were offering consultation events and enquired how busy we'd been.

**Event images:**



## **APPENDIX 9**

### **EVENT PANELS**

**Stage One Consultation Feedback Report  
November 2016**







## Aerial views east sections 3 and 4



Key:

- 12.1 Preferred line route options
- 12.2 Alternative line route options
- 12.3 Alternative line route options (A, B, C, D)
- 12.4 Section separation indicators
- 12.5 Section separation buffer
- 12.6 Road crossings and route options
- 12.7 Road crossings and route options (A, B, C, D)
- 12.8 Road crossings and route options (A, B, C, D)
- 12.9 Road crossings and route options (A, B, C, D)
- 12.10 Road crossings and route options (A, B, C, D)
- 12.11 Road crossings and route options (A, B, C, D)
- 12.12 Road crossings and route options (A, B, C, D)
- 12.13 Road crossings and route options (A, B, C, D)
- 12.14 Road crossings and route options (A, B, C, D)
- 12.15 Road crossings and route options (A, B, C, D)
- 12.16 Road crossings and route options (A, B, C, D)
- 12.17 Road crossings and route options (A, B, C, D)
- 12.18 Road crossings and route options (A, B, C, D)
- 12.19 Road crossings and route options (A, B, C, D)
- 12.20 Road crossings and route options (A, B, C, D)
- 12.21 Road crossings and route options (A, B, C, D)
- 12.22 Road crossings and route options (A, B, C, D)
- 12.23 Road crossings and route options (A, B, C, D)
- 12.24 Road crossings and route options (A, B, C, D)
- 12.25 Road crossings and route options (A, B, C, D)
- 12.26 Road crossings and route options (A, B, C, D)
- 12.27 Road crossings and route options (A, B, C, D)
- 12.28 Road crossings and route options (A, B, C, D)
- 12.29 Road crossings and route options (A, B, C, D)
- 12.30 Road crossings and route options (A, B, C, D)
- 12.31 Road crossings and route options (A, B, C, D)
- 12.32 Road crossings and route options (A, B, C, D)
- 12.33 Road crossings and route options (A, B, C, D)
- 12.34 Road crossings and route options (A, B, C, D)
- 12.35 Road crossings and route options (A, B, C, D)
- 12.36 Road crossings and route options (A, B, C, D)
- 12.37 Road crossings and route options (A, B, C, D)
- 12.38 Road crossings and route options (A, B, C, D)
- 12.39 Road crossings and route options (A, B, C, D)
- 12.40 Road crossings and route options (A, B, C, D)
- 12.41 Road crossings and route options (A, B, C, D)
- 12.42 Road crossings and route options (A, B, C, D)
- 12.43 Road crossings and route options (A, B, C, D)
- 12.44 Road crossings and route options (A, B, C, D)
- 12.45 Road crossings and route options (A, B, C, D)
- 12.46 Road crossings and route options (A, B, C, D)
- 12.47 Road crossings and route options (A, B, C, D)
- 12.48 Road crossings and route options (A, B, C, D)
- 12.49 Road crossings and route options (A, B, C, D)
- 12.50 Road crossings and route options (A, B, C, D)
- 12.51 Road crossings and route options (A, B, C, D)
- 12.52 Road crossings and route options (A, B, C, D)
- 12.53 Road crossings and route options (A, B, C, D)
- 12.54 Road crossings and route options (A, B, C, D)
- 12.55 Road crossings and route options (A, B, C, D)
- 12.56 Road crossings and route options (A, B, C, D)
- 12.57 Road crossings and route options (A, B, C, D)
- 12.58 Road crossings and route options (A, B, C, D)
- 12.59 Road crossings and route options (A, B, C, D)
- 12.60 Road crossings and route options (A, B, C, D)
- 12.61 Road crossings and route options (A, B, C, D)
- 12.62 Road crossings and route options (A, B, C, D)
- 12.63 Road crossings and route options (A, B, C, D)
- 12.64 Road crossings and route options (A, B, C, D)
- 12.65 Road crossings and route options (A, B, C, D)
- 12.66 Road crossings and route options (A, B, C, D)
- 12.67 Road crossings and route options (A, B, C, D)
- 12.68 Road crossings and route options (A, B, C, D)
- 12.69 Road crossings and route options (A, B, C, D)
- 12.70 Road crossings and route options (A, B, C, D)
- 12.71 Road crossings and route options (A, B, C, D)
- 12.72 Road crossings and route options (A, B, C, D)
- 12.73 Road crossings and route options (A, B, C, D)
- 12.74 Road crossings and route options (A, B, C, D)
- 12.75 Road crossings and route options (A, B, C, D)
- 12.76 Road crossings and route options (A, B, C, D)
- 12.77 Road crossings and route options (A, B, C, D)
- 12.78 Road crossings and route options (A, B, C, D)
- 12.79 Road crossings and route options (A, B, C, D)
- 12.80 Road crossings and route options (A, B, C, D)
- 12.81 Road crossings and route options (A, B, C, D)
- 12.82 Road crossings and route options (A, B, C, D)
- 12.83 Road crossings and route options (A, B, C, D)
- 12.84 Road crossings and route options (A, B, C, D)
- 12.85 Road crossings and route options (A, B, C, D)
- 12.86 Road crossings and route options (A, B, C, D)
- 12.87 Road crossings and route options (A, B, C, D)
- 12.88 Road crossings and route options (A, B, C, D)
- 12.89 Road crossings and route options (A, B, C, D)
- 12.90 Road crossings and route options (A, B, C, D)
- 12.91 Road crossings and route options (A, B, C, D)
- 12.92 Road crossings and route options (A, B, C, D)
- 12.93 Road crossings and route options (A, B, C, D)
- 12.94 Road crossings and route options (A, B, C, D)
- 12.95 Road crossings and route options (A, B, C, D)
- 12.96 Road crossings and route options (A, B, C, D)
- 12.97 Road crossings and route options (A, B, C, D)
- 12.98 Road crossings and route options (A, B, C, D)
- 12.99 Road crossings and route options (A, B, C, D)
- 12.100 Road crossings and route options (A, B, C, D)

## Welcome to our consultation



We've done lots of work to identify routes and would now like your local knowledge and comments to check the decisions we've made and develop our proposals further. This consultation is your opportunity to influence our work. Using your feedback together with our own assessments we can identify a preferred line route that keeps an impacts as low as we can.

### Find out more

Today we're showing detailed maps of the preferred line route and line route options. Images of what our work might look like: our technical documents, which provide more detail about our work. If you have any questions, please ask a member of the team.





**SP MANWEB**

**Reinforcement to the North Shropshire  
Electricity Distribution Network**



**Appendix to Chapter 4**






**4.2 Earlier route corridors used for identifying  
those with an interest in land at the launch of  
non-statutory consultation**

**DCO Document 5.1.4**

**PINS Reference: EN020021  
Planning Act 37(3)(c)  
November 2018**



 Refined Study Area  
 SPEN Substation Compound

 Route Option 1  
 Route Option 2  
 Route Option 3  
 Route Option 4  
 Possible Intersections between Option 2 and 3

 UK Unitary Authority Boundary

**DRAFT ONLY**

**FIGURE 4.10**  
**ROUTE OPTIONS**  
**STEP D**

Please see appendix for disclaimers and data sources

SCALE 0 0.5 1 2 Kilometers  
1:60,000

Ordnance Survey data © Crown copyright and database right 2014

**SP MANWEB**

**Reinforcement to the North Shropshire  
Electricity Distribution Network**

**Appendix to Chapter 4**

**4.3 Project Update 2**

**DCO Document 5.1.4**

**PINS Reference: EN020021  
Planning Act 37(3)(c)  
November 2018**



## Reinforcement to North Shropshire Electricity Distribution Network: 132,000 volt wood pole overhead line from Oswestry to Wem



### Updated information on our proposal for new electricity line in North Shropshire

- More than 120 comments received to our Stage One Consultation
- Your feedback has helped us review and refine the route
- New sections now proposed near Hordley, Cockshutt and Noneley

**Thank you for all your feedback and for attending our events held as part of the initial consultation on this important infrastructure project in North Shropshire. Your feedback has helped us review our proposals and make changes where appropriate.**

Over the 10 week consultation, which closed on 9th September 2016, more than 120 comments (via emails, feedback forms and phone-calls) were received. Lots of people also attended our public events, in Cockshutt, Wem, Hordley and Whittington, and provided a variety of comments.

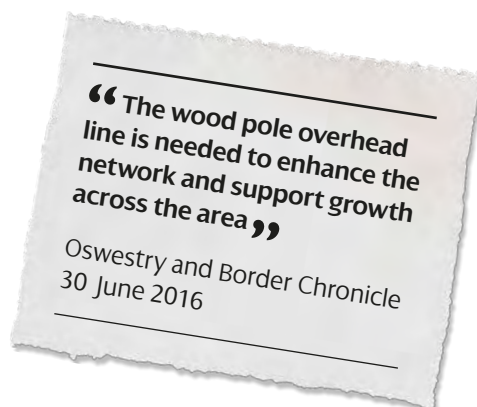
These comments supported our investment in upgrading the electricity network in the area. They also provided additional information on our proposals. In terms of the concerns raised, these were about visual impacts in relation to particular sections of the preferred line route.

All comments from local people, landowners and statutory bodies have now been considered and we are able to update you on our response – see inside for details.

**This has resulted in an updated route for the new line. We've published the details of the proposed route which you can see in the fold-out plan in this newsletter.**

### In the media

The start of the consultation was widely announced in a number of local newspapers in June and July. In addition, this coverage provided background information on our proposal for installing the new 132kV overhead line.



### IN THIS NEWSLETTER

- Updated plan for line route
- How your feedback influenced the updated proposals
- Information on agreeing land rights with owners and occupiers

# Key issues from Stage One Consultation

We've received really useful feedback on the four key areas we asked for comments on.

## Comments on the Preferred Line Route

- People commented on the likely local environmental constraints affecting Section 2 (Hordley).**  
 We've used this feedback to review options, and identified a preference for a new Section 2A, the evaluation of which is almost complete. If there are any changes to this section, we'll let people know. This route supported retaining Section 1 (Babbinswood), as opposed to following the line of a former tower line.
- Comments were also received from people near Section 3 (Cockshutt), including likely visual impacts in the area from property owners.**  
 As a result of this feedback we've decided to follow a more southerly route. This is further away from Cockshutt and avoids greater impacts on any single property in the area.
- Concerns were raised about the proximity of the new overhead line in Section 4 (Noneley), and suggested alternatives: to use the existing 33kV overhead line; or identify a new line route north of Noneley.**  
 As the existing line cannot be upgraded, and a parallel route would be less preferable for visual impact reasons, we looked at replacing the existing 33kV line with the new 132kV line and installing the 33kV line along the preferred route. However, the likely low level of impact on the landscape character to the south of Noneley of the new 132kV line would not be very different to that of a 33kV overhead line, whereas, it would be to the north. To reduce any likely visual impacts, the updated line has been moved further south from properties in Noneley. As part of the consultation, SP Energy Networks has spoken to bodies responsible for safeguarding Sleaf Airfield and received no objection to the proximity of the line route to the airfield.

## Comments on the likely environmental impacts

- Comments referred to the Baggy Moor and River Perry area and ponds in the central area of the line route, which are important bird feeding areas. People also told us about likely impacts on farming operations in the Hordley area.**  
 The changes we have made to the line route have taken these comments into account.

## Comments on other aspects of the project

- We received a small number of comments relating to the earlier work we carried out and whether the line could be placed underground.**  
 Our assessment work to date shows that the likely level of landscape and visual impact wouldn't justify placing any sections of the overhead line underground. This position will be reviewed in light of further environmental assessment work. An overhead wood pole trident line allows us to find the right balance between minimising environmental impacts and ensuring the new line offers value for money, which is in the interest of bill payers.

## Comments on the consultation

- From the comments received, there was generally a level of support for the way the consultation was run and most respondents considered they were left with sufficient information in order to give informed feedback.**  
 Feedback on the consultation itself is really useful and we'll use this when we plan our next stage.

## An artist's impression of how the new line could look in the local landscape

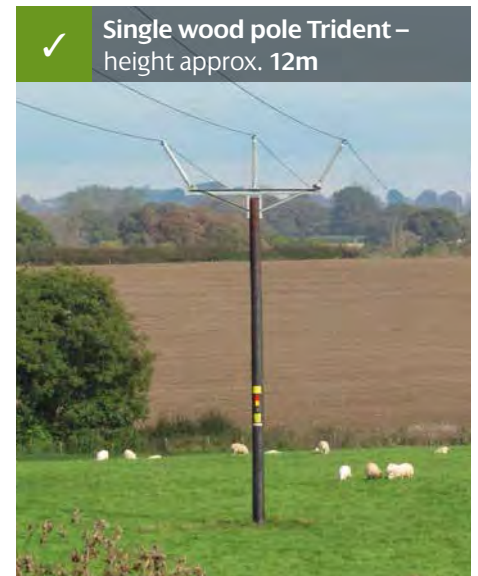
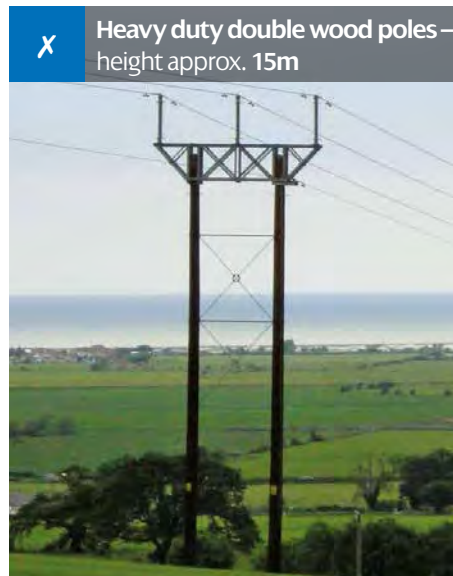
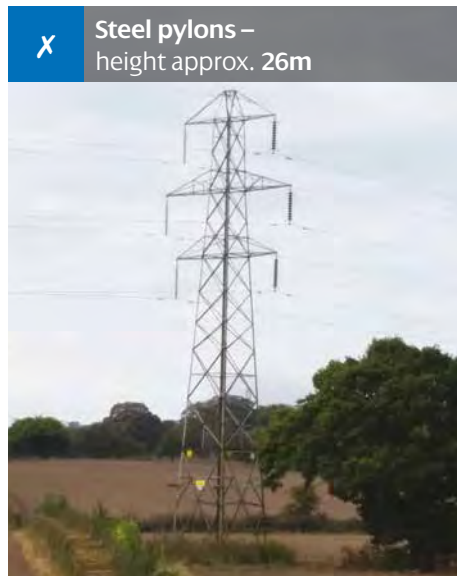


Existing view



Proposed view (artist's impression)

## Using Trident wood pole instead of steel tower or heavy duty designs



Indicative heights. Actual heights can vary depending on design requirements.

### Stakeholder feedback

As well as helpful feedback from local people, we received a number of comments from statutory bodies such as Shropshire Council and local parish councils, and the Environment Agency.

We also received comments from a range of other organisations such as the local wildlife trust and the RSPB. These responses were generally supportive and provided additional information.

## Proposed route for the new line

**All of the feedback we received and further assessments undertaken by SP Energy Networks has resulted in an updated route for the new line, referred to as 'the proposed route'. You can see this in the fold-out plan in this newsletter.**

### Comments on updated sections of the line route

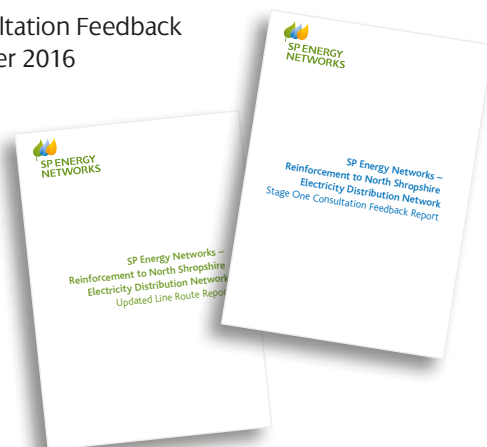
If you have comments on any of the sections shown on the fold-out plan in this newsletter, then please let us know. You can contact the project team on the details on the back page.

Any comments will be passed to relevant representatives from SP Energy Networks who will then be back in touch to discuss these with you.

## Where to find out more

The work carried out by SP Energy Networks and its advisers is set out in two technical reports:

- Stage One Consultation Feedback Report, November 2016
- Updated Line Route Report, November 2016



These documents are available on our website and at these reference locations:

**Wem Library,**  
High Street, Wem, Shrewsbury SY4 5AA

**Cockshutt Millennium Hall,**  
Cockshutt SY12 0JQ

**Oswestry Library,**  
Arthur Street, Oswestry SY11 1JN

**Wem Town Council,**  
Edinburgh House, New Street, Wem SY4 5DB

**Ellesmere Library,**  
Fullwood House, Victoria Street, Ellesmere SY12 0AA

**Whitchurch Library,**  
High Street, Whitchurch SY13 1AX



## Agreeing voluntary land rights with landowners and occupiers

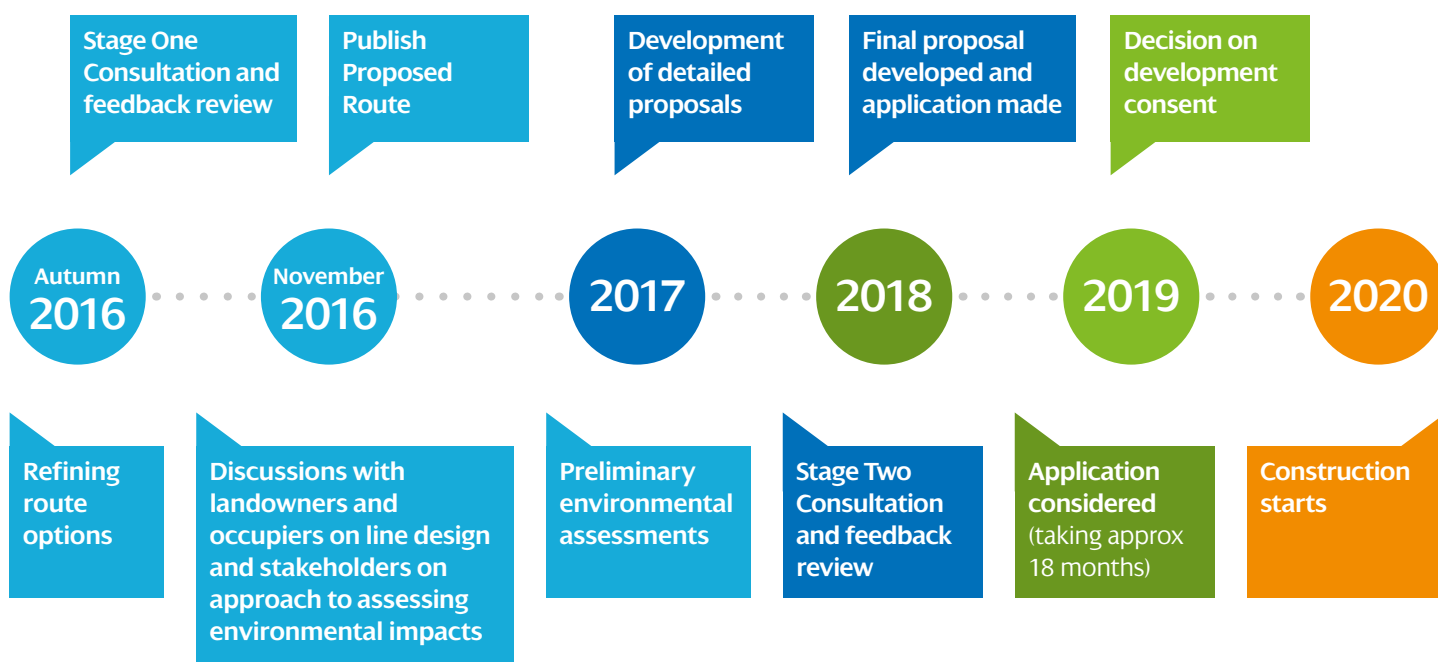
Wherever possible, we seek to agree rights to construct, operate and maintain our equipment, with landowners and occupiers in the form of either a Wayleave Consent or a Deed of Easement.

We will start discussions about pole positions on this project as soon as possible with a view to agreeing draft voluntary consents. These are already familiar to many landowners and occupiers.

Where we are unable to reach agreement for voluntary consent, we will seek to use the statutory powers granted to us under the relevant legislation. We will still continue to negotiate voluntary agreement with landowners and occupiers, seeing this as a preferable approach.

If you are a landowner/occupier affected by our proposals and have any questions or want to find out more, please contact the community relations team (details below), who can put you in touch with SP Energy Networks' land agents.

## Project timeline



## Contact us:

Email us: [enquiries@spennorthshropshire.co.uk](mailto:enquiries@spennorthshropshire.co.uk)

Visit our website: [www.spenergynetworks.co.uk/north\\_shropshire](http://www.spenergynetworks.co.uk/north_shropshire)

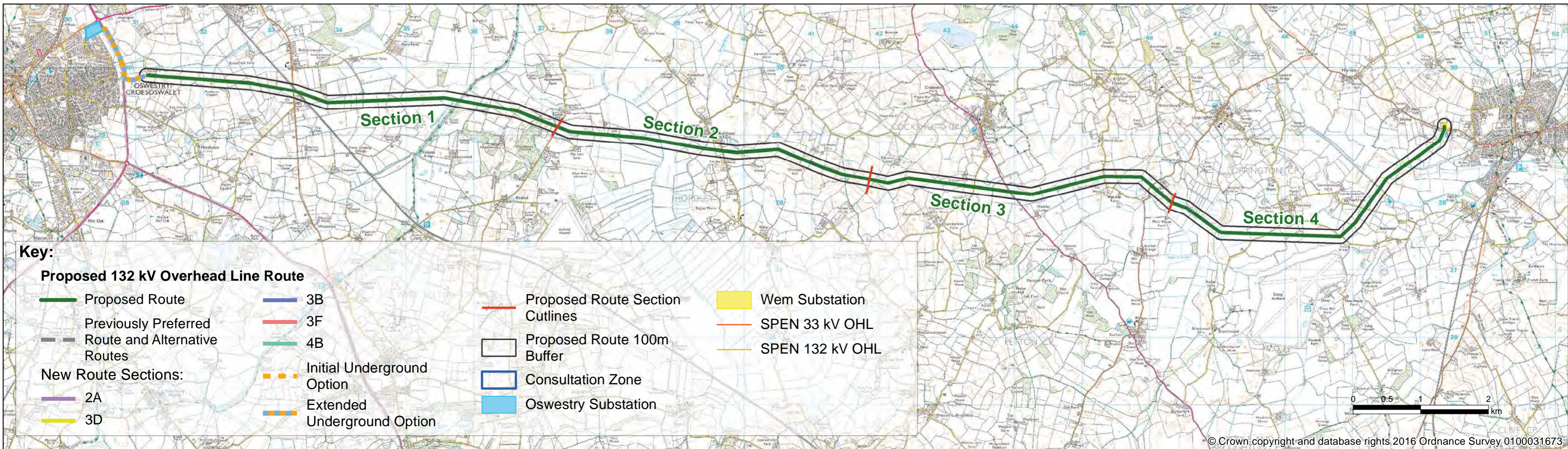
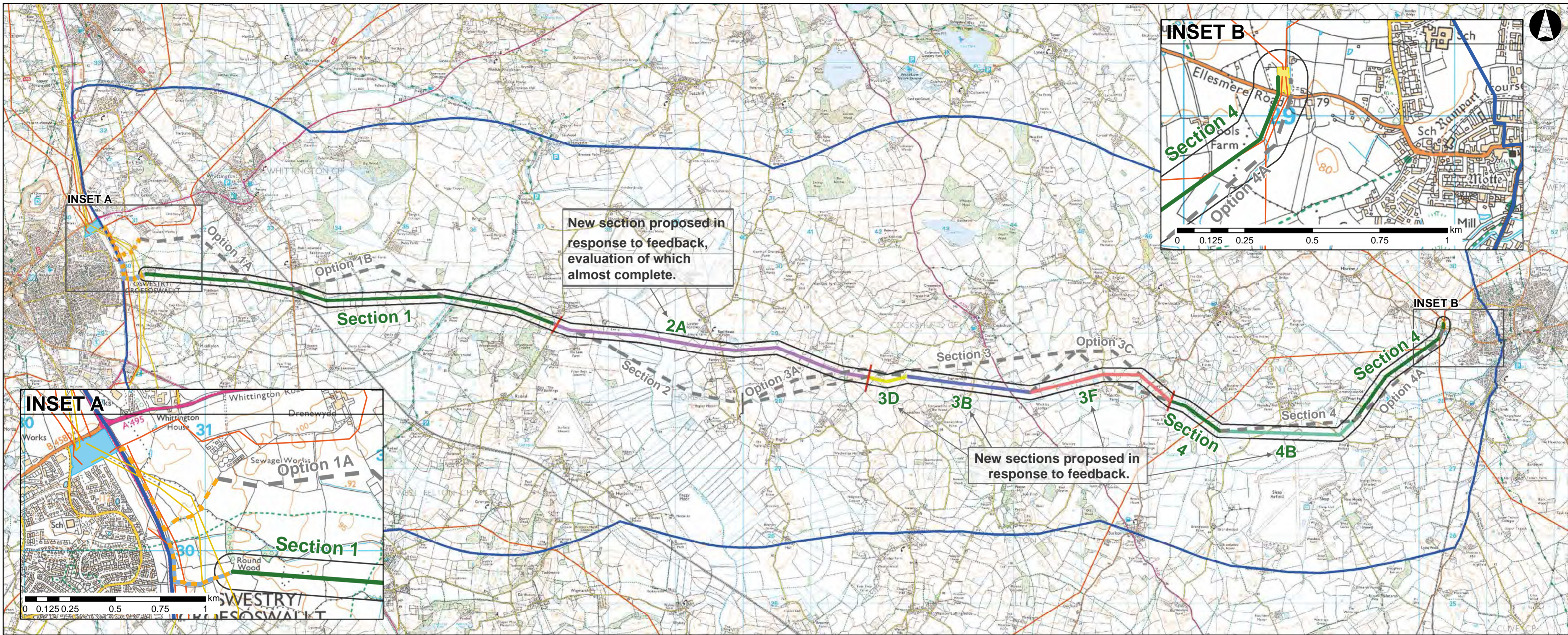
Give us a call: 0800 804 4666

Write to us: FREEPOST SPEN NSR

We're sending a copy of this newsletter to residents, businesses and landowners and occupiers in the consultation area. We're also sending it to local parish councils.

If you'd like any further copies or would like a large print version, please do not hesitate to get in touch.







**SP MANWEB**

**Reinforcement to the North Shropshire  
Electricity Distribution Network**

**Appendix to Chapter 4**

**4.4 Letter sent to landowners about options at  
Lower Hordley and Noneley**

**DCO Document 5.1.4**

**PINS Reference: EN020021  
Planning Act 37(3)(c)  
November 2018**



SP Energy Networks  
North Shropshire Reinforcement  
3 Prenton Way,  
Prenton  
CH43 3ET

[ADDRESS]

**Date:** 20 February 2017  
**Our Ref:** NSR

Dear **xxxxxx**

**Reinforcement to North Shropshire Electricity Distribution Network: Proposed 132,000 volt Wood Pole Overhead Line from Oswestry to Wem**

SP Energy Networks is writing to you on behalf of SP Manweb plc (SPM) the statutory undertaker and holder of the electricity distribution licence for North and Mid Wales, Merseyside, Cheshire and North Shropshire. As part of its licence obligations SPM is required to distribute electricity for the purpose of giving supply to any premises within its licence area or to enable a supply to be so given.

SP Energy Networks is proposing a new overhead line to operate at 132,000 volts (132kV) which will have the effect of reinforcing the electricity distribution and supply network across North Shropshire. The reinforcing of the North Shropshire electricity distribution network is essential for both existing and future electricity supplies for the area. The new overhead line will be supported mostly by single wood poles at a height of approximately 12m and will connect the existing electricity substations at Oswestry and Wem. We have identified potential routes for the new line and you are being written to because your land may be affected by part of our proposals. In some instances, you may already have had a visit by members of our Land Rights team as we seek to design the most appropriate line route.

These new line routes follow an initial consultation process, which included a dedicated project website

([http://www.spenergynetworks.co.uk/pages/reinforcement to north shropshire electricity distribution network.asp](http://www.spenergynetworks.co.uk/pages/reinforcement%20to%20north%20shropshire%20electricity%20distribution%20network.asp)) and sending newsletters, the latest being sent last November 2016, to homes and properties in the area, including your property. Please let us know if you would like an additional copy of the November 2016 newsletter. We have also consulted with individual landowners and held public events for local people, landowners and elected representatives to attend. We collated the resultant feedback for consideration and then commenced a more detailed line design process directly liaising and discussing with affected parties to understand their individual views and requirements. As a result of this further work we have been able to identify an alternative line route to the previously shown Noneley South route. We would now like to investigate a line route design on site along the route which is as follows:

Section 4.1 Noneley North



We understand, via our searches, that you have land or property affected by the areas for investigation, as such we will be contacting you directly within the next few weeks to discuss, in detail, the line routeing proposals. In the meantime, if you wish to contact the project team to discuss our proposals then please do not hesitate to contact us using either of the following methods:

By mail using FREEPOST to the address: FREEPOST SPEN NSR.

Or, please contact our FREEPHONE telephone number on: 0800 804 4666 to discuss matters further.

We look forward to meeting with you.

Yours sincerely

**NIA WYN DAVIES**  
**Freedom Group**  
**For and on behalf of SP Energy Networks**

Enc.

Section 4.1 plan - Noneley North





SP Energy Networks  
North Shropshire Reinforcement  
3 Prenton Way,  
Prenton  
CH43 3ET

[ADDRESS]

**Date:** 20 February 2017  
**Our Ref:** NSR

Dear **xxxxxx**

**Reinforcement to North Shropshire Electricity Distribution Network: Proposed 132,000 volt Wood Pole Overhead Line from Oswestry to Wem**

SP Energy Networks is writing to you on behalf of SP Manweb plc (SPM) the statutory undertaker and holder of the electricity distribution licence for North and Mid Wales, Merseyside, Cheshire and North Shropshire. As part of its licence obligations SPM is required to distribute electricity for the purpose of giving supply to any premises within its licence area or to enable a supply to be so given.

SP Energy Networks is proposing a new overhead line to operate at 132,000 volts (132kV) which will have the effect of reinforcing the electricity distribution and supply network across North Shropshire. The reinforcing of the North Shropshire electricity distribution network is essential for both existing and future electricity supplies for the area. The new overhead line will be supported mostly by single wood poles at a height of approximately 12m and will connect the existing electricity substations at Oswestry and Wem. We have identified potential routes for the new line and you are being written to because your land may be affected by part of our proposals. In some instances, you may already have had a visit by members of our Land Rights team as we seek to design the most appropriate line route.

These new line routes follow an initial consultation process, which included a dedicated project website

([http://www.spenergynetworks.co.uk/pages/reinforcement to north shropshire electricity distribution network.asp](http://www.spenergynetworks.co.uk/pages/reinforcement%20to%20north%20shropshire%20electricity%20distribution%20network.asp)) and sending newsletters, the latest being sent last November 2016, to homes and properties in the area, including your property. Please let us know if you would like an additional copy of the November 2016 newsletter. We have also consulted with individual landowners and held public events for local people, landowners and elected representatives to attend. We collated the resultant feedback for consideration and then commenced a more detailed line design process directly liaising and discussing with affected parties to understand their individual views and requirements. As a result of this further work we have been able to identify an alternative line route to the previously shown Lower Hordley South route. We would now like to investigate a line route design on site along the route which is as follows:

Section 2.1 Lower Hordley (north).



We understand, via our searches, that you have land or property affected by the areas for investigation, as such we will be contacting you directly within the next few weeks to discuss, in detail, the line routeing proposals. In the meantime, if you wish to contact the project team to discuss our proposals then please do not hesitate to contact us using either of the following methods:

By mail using FREEPOST to the address: FREEPOST SPEN NSR.

Or, please contact our FREEPHONE telephone number on: 0800 804 4666 to discuss matters further.

We look forward to meeting with you.

Yours sincerely

**NIA WYN DAVIES**  
**Freedom Group**  
**For and on behalf of SP Energy Networks**

Enc.

Section 2.1 plan - Lower Hordley.

**SP MANWEB**

**Reinforcement to the North Shropshire  
Electricity Distribution Network**

**Appendix to Chapter 4**

**4.5 Project Update 3**

**DCO Document 5.1.4**

**PINS Reference: EN020021  
Planning Act 37(3)(c)  
November 2018**

## Reinforcement to North Shropshire Electricity Distribution Network: 132,000 volt wood pole overhead line from Oswestry to Wem



### Plans for supporting local growth in North Shropshire take shape

- Discussions with landowners, occupiers and others with an interest in land affected by the proposed line design
- Proposed Line Route updated following these discussions and our own surveys
- New alternative route option added near the Woodhouse Estate
- Update at Lower Hordley and Noneley

Since our last update, we've been continuing to develop our proposals for a new overhead line between Wem and Oswestry – an important infrastructure project supporting local growth in North Shropshire.

Last November, we published some line route changes, based on feedback at our first stage of consultation, conversations with residents and landowners, and our own assessments.

We've been continuing these discussions since the autumn.

Based on these discussions with landowners and local communities, we have looked again at route options near Lower Hordley and Noneley.

We've also introduced an alternative route to the north of the Woodhouse Estate, based on landowner feedback.

You can find out more about these options inside.

### Shropshire Council publishes new planning document

Shropshire Council published its new Draft Economic Growth Strategy in March. This sits alongside its updated Local Plan, which was published for consultation in January.

Both of these documents confirm new housing and employment aims in North Shropshire's market towns.

You can view these documents on Shropshire Council's website.

*“ We will work closely with landowners, tenants and utility providers to foster the effective planning of infrastructure investment in Shropshire... We have engaged with Scottish Power Energy Networks in helping to secure significant investment proposals in the north of the County to improve electricity infrastructure by 2021. ”*

*Shropshire Council Draft Economic Growth Strategy 2017-2021*

### IN THIS NEWSLETTER

- Information on the work we've been doing since November 2016
- A look ahead to our autumn 2017 consultation
- Details on how you can give comments on this update. See map page

# Your comments and our own assessments

## Supporting landowners and farming

Working closely with landowners along the route has helped us better understand how our proposals might affect their land. We've received really helpful suggestions, including slight alterations to the Proposed Line Route to minimise impacts on farming activities and properties.

For example, some landowners have told us which side of a field boundary they would prefer to have the wood poles used in the overhead line, or asked that we minimise crossing open fields as much as possible.

We've looked at ways of achieving this, alongside the engineering and visual requirements we have to consider, and made changes to the Preferred Line Route.



## Protecting wildlife and the environment



We need to consider local wildlife and the environment and have carried out walkover species and habitat surveys along the Proposed Line Route. We've studied the ponds, hedges and trees and looked closely at wildlife, including bats, [REDACTED], breeding birds and newts in the area.

Where possible, the Proposed Line Route is avoiding these environmental features. This survey information will be really important as we move towards a detailed design for the route and individual wood pole locations.

## Improving the proposals at both substations and our plans for construction

We've looked in further detail at each end of the proposed overhead line. We have confirmed the location of the start of the overhead line near Round Wood and we'll be using underground cables to get there from Oswestry substation.

We have also developed the initial design of Wem substation. We propose undergrounding a section of one of the two existing 33kV overhead lines that run into the substation, in order to facilitate the work required at the substation.

Following discussions with landowners, we have identified possible construction access routes for installing the proposed overhead line. We've also put forward indicative options for the two construction compounds required. We'll use these to help minimise traffic movements in the area.





Do you have any comments on these updates? Please see map page for details

# Updates to our Proposed Line Route

We have carried out more detailed assessment work near Lower Hordley and Noneley. Our work has also identified a possible alternative route near the Woodhouse Estate.

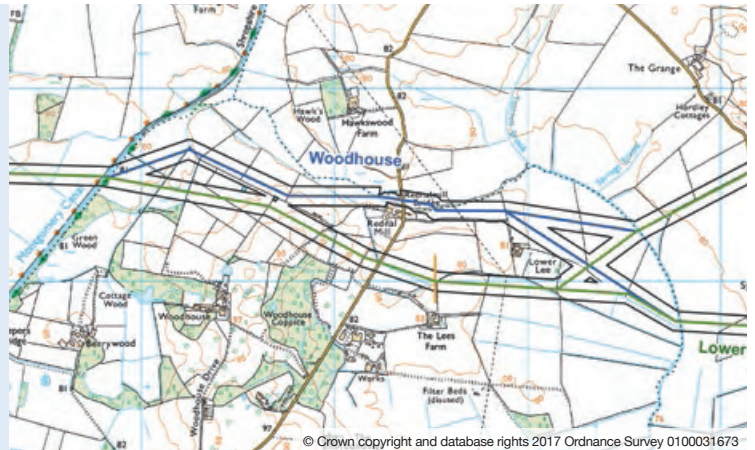
There is more detail on these updates below and a full plan of the Proposed Line Route is inside.

## New line route alternative near the Woodhouse Estate

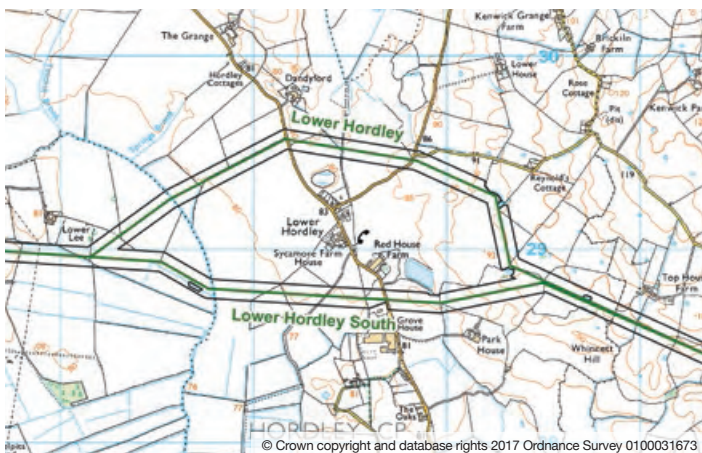
Landowner feedback in Section One has included a suggestion for an alternative route to the north of the Woodhouse Estate.

We think this could be a viable alternative, so we are carrying out further assessments before we confirm the proposed route.

We would welcome any comments on this update and we will consider these alongside our ongoing assessments.



## Line route at Lower Hordley

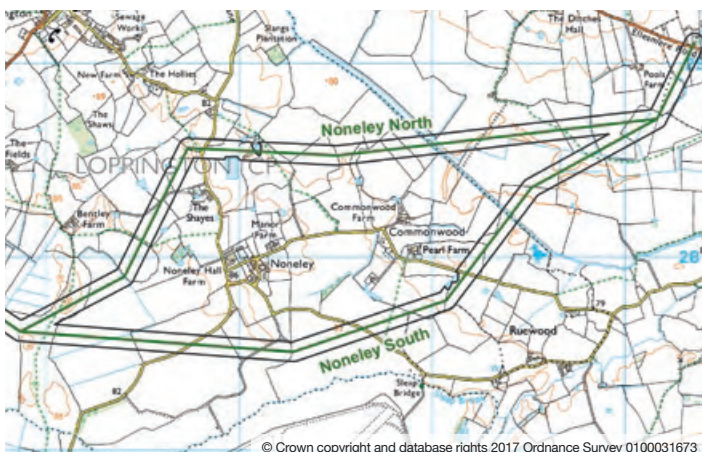


In this section, we assessed the likely landscape and visual, heritage and ecological impacts alongside those on the farming operations.

This found that the Lower Hordley south option would result in slightly fewer environmental impacts, although the new more northerly option has less impact on specific local farming activities and has more support from affected landowners.

We need to carry out further design work and more consultation with local people and landowners, as well as considering our assessments near the Woodhouse Estate before making a final decision.

## Line route at Noneley



Further work involved environmental and engineering experts designing a route running north of Noneley and assessing likely landscape and visual, historic and ecological impacts, including listed buildings in the area.

So far, this work has shown no overall environmental preference for an option north of Noneley. Affected landowners have expressed support and concerns for both routes, although there is a slight preference for a southerly option, as previously proposed.

Consultation with local people and landowners is still ongoing and we will keep those who have expressed interest in this section informed.

## Assessing environmental impact

Our Environmental Scoping Report explains where the project might have environmental impacts, such as on the landscape and views, ecology and heritage, flooding, and land use. We've discussed the report with bodies such as Shropshire Council, the Environment Agency and the Planning Inspectorate so they can advise us on our ongoing environmental assessments and be confident we're assessing all of the potential impacts.

We received some useful comments from these stakeholders and the Planning Inspectorate has accepted that the main environmental impacts are more likely during construction than when the line is installed. We're now continuing our environmental surveys and the initial assessments will be presented in the Preliminary Environmental Impact Report, which we'll publish at our statutory consultation in the autumn.

We have also recently notified the Planning Inspectorate of our intention to seek consent for the new line, and we are now included in the projects section on its website: [www.infrastructure.planninginspectorate.gov.uk/](http://www.infrastructure.planninginspectorate.gov.uk/)

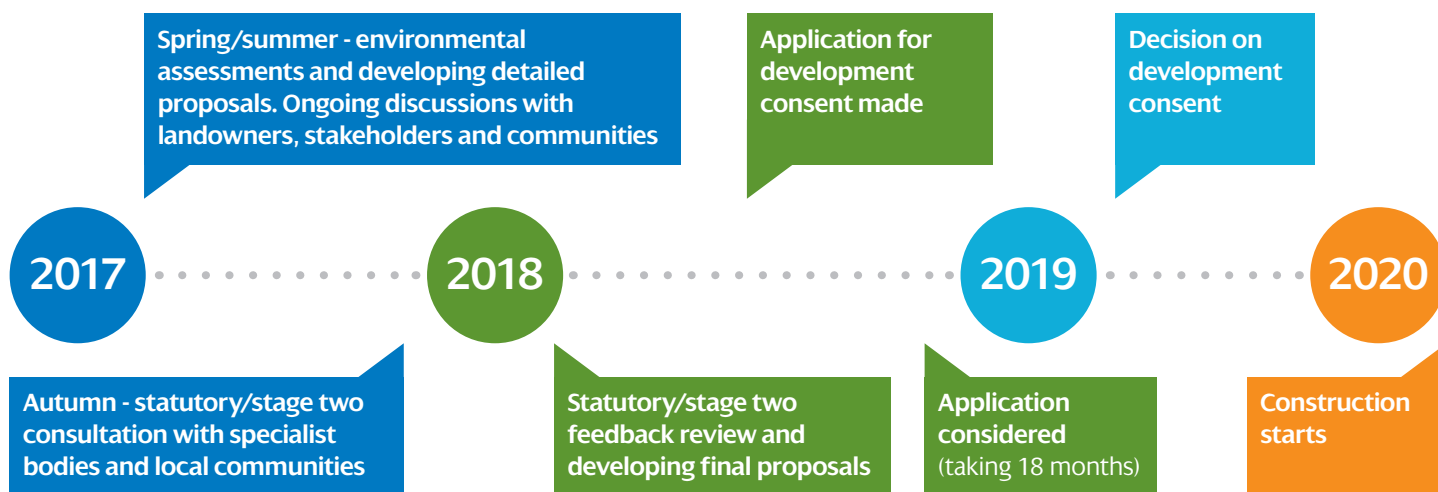
## Autumn consultation – your opportunity to influence the design of the wood pole line

This autumn we'll hold a statutory consultation – this takes place in line with formal planning requirements when the proposals have reached a detailed stage.

We'll provide people living near the proposed route with information on our work including where we're proposing to place the wooden poles and the areas we need for construction. We will also consult specialist bodies responsible for the environment, heritage, ecology and other important considerations. We will send out a newsletter, our website will be updated and we'll hold events so you can talk to our team.

We anticipate this will be our last consultation and the final opportunity to influence the proposals before we make an application for consent. If you have comments on our detailed proposals it will be important to take part so your views can be considered.

## Project timeline



## Contact us:

Email us: [enquiries@spennorthshropshire.co.uk](mailto:enquiries@spennorthshropshire.co.uk)

Visit our website: [www.spenergynetworks.co.uk/north\\_shropshire](http://www.spenergynetworks.co.uk/north_shropshire)

Give us a call: 0800 804 4666

Write to us: FREEPOST SPEN NSR

We're sending a copy of this newsletter to residents, businesses and landowners and occupiers in the consultation area. We're also sending it to local parish councils.

If you'd like any further copies or would like a large print version, please do not hesitate to get in touch.



**Do you have an interest in land near the proposed overhead line?**

We really appreciate the positive approach from those who own, occupy or have another interest in land affected by the proposals, and their willingness to work with us to reach agreements. We'll be progressing with formal agreements with these landowners in the summer and early autumn 2017.

Where no agreement is reached, we will seek to use the statutory powers granted to us under the relevant legislation. In such cases, we will continue to negotiate agreements, which is our preferred approach and for which the majority of landowners have indicated a preference.

**Requests For Information**

Anyone with an interest in land affected by the project will be notified at our statutory consultation (later this year). To ensure we write to all relevant people we want to obtain the correct information on land ownerships, tenancies and any other interests.

To make sure we have all of the information we need, we will be writing to those we understand to have a land interest to find out about any interests relevant to their land.

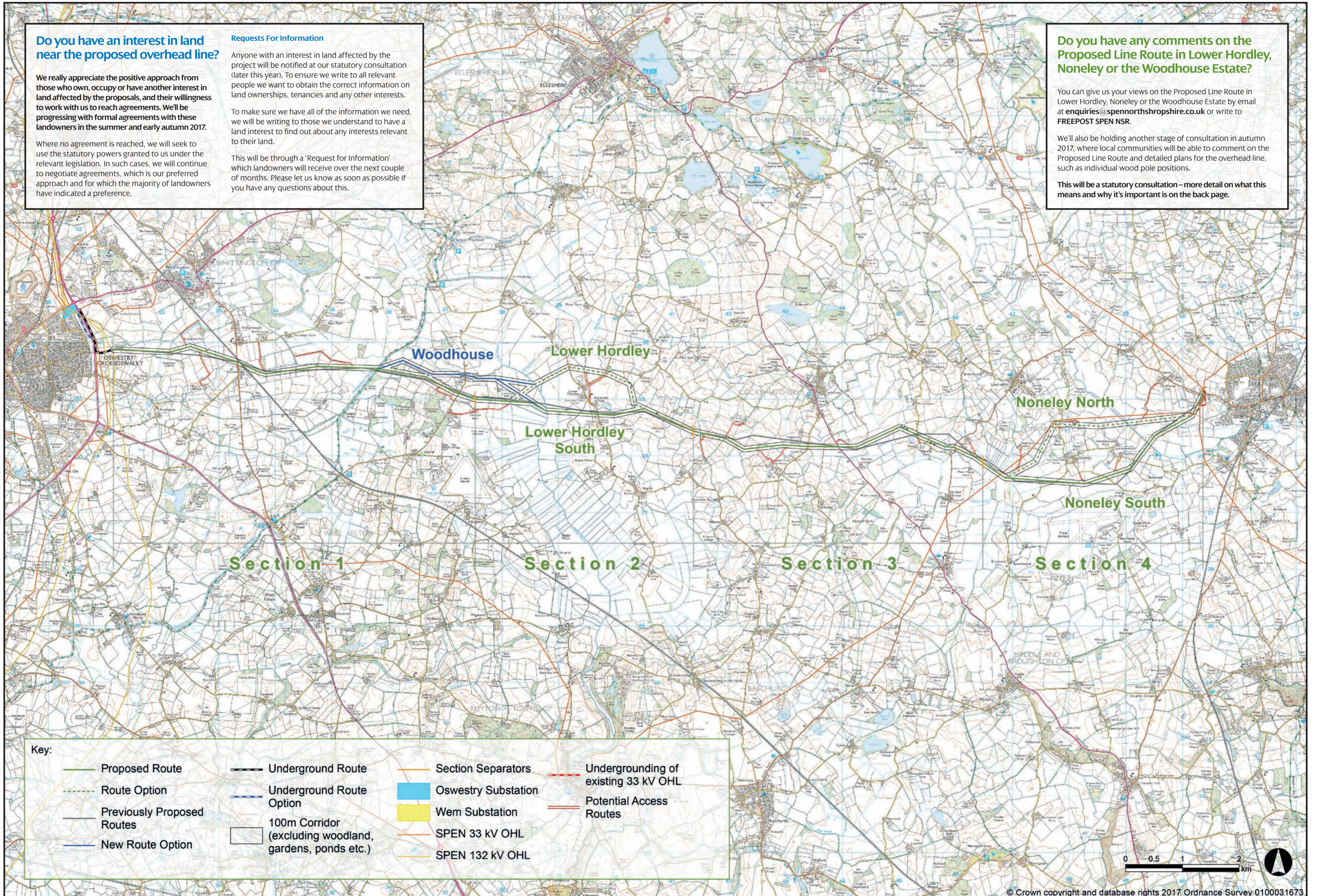
This will be through a 'Request for Information' which landowners will receive over the next couple of months. Please let us know as soon as possible if you have any questions about this.

**Do you have any comments on the Proposed Line Route in Lower Hordley, Noneley or the Woodhouse Estate?**

You can give us your views on the Proposed Line Route in Lower Hordley, Noneley or the Woodhouse Estate by email at [enquiries@spennorthshropshire.co.uk](mailto:enquiries@spennorthshropshire.co.uk) or write to FREEPOST SPEN NSR.

We'll also be holding another stage of consultation in autumn 2017, where local communities will be able to comment on the Proposed Line Route and detailed plans for the overhead line, such as individual wood pole positions.

**This will be a statutory consultation – more detail on what this means and why it's important is on the back page.**



**Key:**

Proposed Route	Underground Route	Section Separators	Undergrounding of existing 33 kV OHL
Route Option	Underground Route Option	Oswestry Substation	Potential Access Routes
Previously Proposed Routes	100m Corridor (excluding woodland, gardens, ponds etc.)	Wem Substation	
New Route Option		SPEN 33 kV OHL	
		SPEN 132 kV OHL	



**SP MANWEB**

**Reinforcement to the North Shropshire  
Electricity Distribution Network**

**Appendix to Chapter 4**

**4.6 Minutes from the meeting with Loppington  
Parish Council**

**DCO Document 5.1.4**

**PINS Reference: EN020021  
Planning Act 37(3)(c)  
November 2018**



**MINUTES of the MEETING of LOPPINGTON PARISH COUNCIL held on Tuesday 11<sup>th</sup> JULY at 7.30pm in Loppington Village Hall**

MEMBERS PRESENT: Mrs. T. Barton, S. Geary, R Parker (vice chair), S Parker, R Stokes and Mrs. S. Witherspoon

Also present Shropshire Councillor B Williams

Mrs L McCormack – Clerk

Twenty members of the public also present

**1. Apologies for absence**

1.1. Apologies from Cllrs. P. Butters and Mrs. D Hume-Miller were received and accepted

1.2. In the absence of the Chairman, Cllr B. Parker took the Chair.

**2. Declarations of Interest**

Cllr. Mrs T. Barton declared a pecuniary interest in Planning Application No. 17/02661/FUL

**3. Presentation from SP Energy Networks regarding the proposed new powerline through the Parish & Public Participation**

This is an informal consultation and all correspondence is taken into account by SPEN. The Parish Council is a statutory Consultee at the Planning Application stage and will comment at that time.

Development & growth to 2026/36 requires the North Shropshire infrastructure upgrade to increase capacity. There are two options currently, either to the north or south around Noneley. SPEN at time of publication (now) have a preference for the Noneley south option.

Formal Consultations will begin in October 2017 – May 2018. In May the Application for the Development Consent Order goes to the Secretary of State. It takes approximately 18 months to the final decision by SS, therefore development will begin 2020.

Taking into consideration the Environmental and planning aspects and impact on residents & landowners the overall preference among landowners is for south route.

Cllr. Brian Williams explained the position with regard to Shropshire Council members and Parish Council that they have no input at this stage; any comments should go directly to SPEN. Cllr. Williams urged residents to object if they wished to do so at the statutory consultation stage.

Mr. Andrew Black, independent chartered surveyor on behalf of Mr. Tony Lay put forward objections to the north route, as agricultural property is already burdened by 33 kv line & the new line will run parallel aggravating the existing agricultural operations which will be exacerbated by parallel lines.

Q & A session:

Regarding understanding of the process, transparency and how this is weighted and judged; SPEN assured the meeting that all comments taken into account. Reports such as environmental impacts are all published on their website. The design work on choice of route and positioning must be done and evidenced prior to the Secretary of State's decision & SPEN must show how feedback has been taken into account.

Underground lines are 2-3 times more expensive and are not feasible for a cost effective and efficient network and impact on future operation and maintenance.

As an example of visual impact there are 12m poles near Wem substation. Bearing in mind where lines will cross roads there is a statutory height clearance so poles might

vary. Nearest line which is similar is near Whittington with the view towards Hinford and St Martins. Any changes to the approved line need to be submitted to SS. SPEN will do a photo montages of the line using national guidelines technical assessment.

The statutory consultation will be on single line either north or south there will be no other options.

#### 4. Approval of Minutes of the last Meeting

The Minutes of the meetings held on 9<sup>th</sup> May and 13<sup>th</sup> June 2017 were approved and signed by the Acting Chairman

5. Matters arising from the May meeting - none

6. Matters Arising from June meeting – none

#### 7. Financial matters:

7.1 Bank reconciliation/financial report

7.2 Chairman to sign account book as reconciled

7.3 Payments for approval

Organisation	Item	Amount
LVHC	Village Hall Hire for Extra Ordinary Meeting – June	£16.00

#### 8. Planning Matters

##### 8.1 Applications for consideration

App. No.	Property	Proposal	LPC Comment
17/02661/ FUL	The Old Smithy, Burlton,	Erection of single storey infill extension to form extended kitchen and utility	No objection

**NB** Cllr. Mrs. T Barton having declared a pecuniary interest in this application left the room and did not take part in the discussion and decision thereon

##### 8.2 Applications received after 4<sup>th</sup> July (if any)

App. No.	Property	Proposal	LPC Comment
17/03082/ FUL	3 Ryecroft Villas, Loppington. SY4 5ST	Erection of first floor rear extension	No objection

**NB** links to Planning Applications are posted on receipt on :-  
<http://loppingtonparishcouncil.gov.uk/environment-2/planning/>

##### 8.3 Commented upon and awaiting decision

App. No.	Property	Proposal	LPC Comment	LPA Decision
17/01978/ REM	Agricultural Workers dwelling NE Coppice Farm, Burlton	Approval of reserved matters (appearance, landscaping, layout and scale) pursuant to permission 16/00606/OUT for erection of an agricultural workers dwelling and detached garage	No Objection	
17/01536/ FUL	3 Noneley Hall Barns, Noneley, SY4 5SL	Erection of single storey rear extension	Object	
17/01537/ LBC	3 Noneley Hall Barns, Noneley, SY4 5SL	Erection of single storey rear extension affecting a Grade II Listed Building	Object	

8.4 Determined since June meeting

App. No.	Property	Proposal	LPC Comment	LPA Decision
16/04626 /VAR	Barn At, Rose Cottage, Brown Heath SY12 0LA	Removal of Condition No.9 (holiday let) attached to 08/01317/FUL dated 11/09/2008 to allow the holiday let unit to be a permanent residence	Object	Permission Granted

*Loppington Parish Council operates a scheme of delegation on planning matters and links to planning applications in the Parish are published on receipt on [loppingtonparishcouncil.gov.uk/environment/planning](http://loppingtonparishcouncil.gov.uk/environment/planning)*

9. Highways

- 9.1 Requests under SC Road Safety Policy - None
- 9.2 New matters received after 4<sup>th</sup> July - None
- 9.3 Work is due to begin on the B4397 from the Village Hall to the Ellesmere Rd.

10. Inspections of Council Property or property maintained by the Parish Council

- 10.1 War Memorial and fencing – Letter received from WI regarding maintenance of the memorial.
- 10.2 Burlton bus shelter. –OK
- 10.3 Burlton Notice Board – OK
- 10.4 Pump and fencing.- OK
- 10.5 Tan Pit and fencing. – waiting on completion of road works
- 10.6 Notice boards Loppington – Cllr. Butters not present to report
- 10.7 Suggestion that a noticeboard would be appropriate for Noneley – investigate siting, costs & permissions required.

11. Reports of Meetings attended (if Any)

- 11.1 SALC Area Committee 19<sup>th</sup> June 2017
- 11.2 Town and Parish Council Forum 27<sup>th</sup> June 2017

12. Consultations (if any)

- 12.1 <https://glos.onlinesurveys.ac.uk/rsnruralsurvey> (e-mailed to members 30th June)  
This is a national survey regarding general issues aimed at ensuring a fair deal for rural communities
- 12.2 <https://www.westmercia-pcc.gov.uk/working-together/west-mercia-fire-governance-consultation/> (e-mailed 4<sup>th</sup> July) closing date 11<sup>th</sup> September.  
This is a survey concerning the Police Commissioners proposals to take on Fire Services in Herefordshire and Shropshire
- 12.3 Other received after 4<sup>th</sup> July if any - None

13. Information Matters and Correspondence

- 13.1 Crime statistics – April – none  
*NB Crime Statistics are reported at <https://www.police.uk/west-mercia/PAF14/crime/>. Link from [loppingtonparishcouncil.gov.uk/links](http://loppingtonparishcouncil.gov.uk/links)*
- 13.2 SALC Bulletins 24<sup>th</sup> May and 21<sup>st</sup> June (e-mailed) –
- 13.3 Bulletins concerned training, latest publications, Pay Claims, Patient Advisory Group, Grants and funding update, Police and Crime Commissioner proposals
- 13.4 Other matters arising after 4<sup>th</sup> July – None



14. Dates for your diary - Next LPC meeting – Tuesday, 12<sup>th</sup> September 2017

SALC meeting with MPs on Friday, 14 July at 1.45pm at Shirehall

Meres and Mosses end of Project Celebration  
Wednesday 26th July 2017, from 6pm, at Alderford

Meeting with John Champion Monday, 17<sup>th</sup> July 2017  
Sovereign Suite, Shrewsbury Town Football Club

Meeting closed at 8: 55 pm

Signed ..... Date :

Draft